



ELECTRONIC COPY

LG807622008
Report verification at igi.org



June 3, 2026

IGI Report Number **LG807622008**

Description **LABORATORY GROWN DIAMOND**

Shape and Cutting Style **ROUND BRILLIANT**

Measurements **8.32 - 8.36 X 5.04 MM**

GRADING RESULTS

Carat Weight **2.15 CARATS**

Color Grade **E**

Clarity Grade **VVS 2**

Cut Grade **IDEAL**

June 3, 2026

IGI Report Number **LG807622008**

Description **LABORATORY GROWN DIAMOND**

Shape and Cutting Style **ROUND BRILLIANT**

Measurements **8.32 - 8.36 X 5.04 MM**

GRADING RESULTS

Carat Weight **2.15 CARATS**

Color Grade **E**

Clarity Grade **VVS 2**

Cut Grade **IDEAL**

ADDITIONAL GRADING INFORMATION

Polish **EXCELLENT**

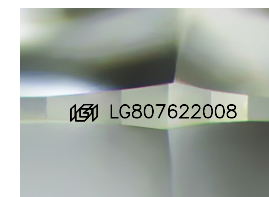
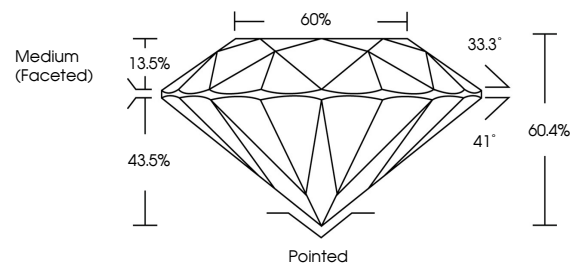
Symmetry **EXCELLENT**

Fluorescence **NONE**

Inscription(s) **IGI LG807622008**

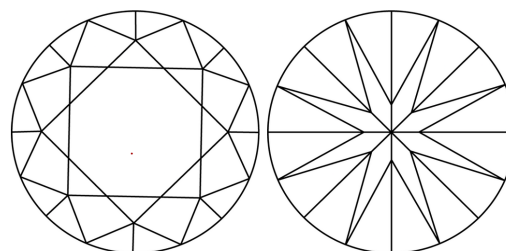
Comments: This Laboratory Grown Diamond was created by Chemical Vapor Deposition (CVD) growth process.
Type IIa

PROPORTIONS



Sample Image Used

CLARITY CHARACTERISTICS



KEY TO SYMBOLS

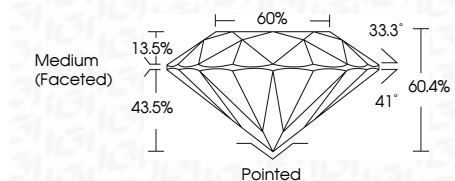
Red symbols indicate internal characteristics.
Green symbols indicate external characteristics.

COLOR

D E F G H I J Faint Very Light Light

CLARITY

FL	IF	VVS ¹⁻²	VS ¹⁻²	SI ¹⁻²	I ¹⁻³
Flawless	Internally Flawless	Very Very Slightly Included	Very Slightly Included	Slightly Included	Included



ADDITIONAL GRADING INFORMATION

Polish **EXCELLENT**

Symmetry **EXCELLENT**

Fluorescence **NONE**

Inscription(s) **IGI LG807622008**

Comments: This Laboratory Grown Diamond was created by Chemical Vapor Deposition (CVD) growth process.
Type IIa



IGI



June 3, 2026
IGI Report No LG807622008
ROUND BRILLIANT

2.15 CARATS
E

8.32 - 8.36 X 5.04 MM
2.15 CARATS
E
VVS 2
IDEAL
60.4%
60%

Medium (Faceted)

Pointed
EXCELLENT
EXCELLENT
NONE
NONE

IGI LG807622008

Comments: This Laboratory Grown Diamond was created by Chemical Vapor Deposition (CVD) growth process.
Type IIa