



ELECTRONIC COPY

LG807621916
Report verification at igi.org



June 3, 2026

IGI Report Number **LG807621916**

Description **LABORATORY GROWN DIAMOND**

Shape and Cutting Style **ROUND BRILLIANT**

Measurements **8.97 - 9.01 X 5.57 MM**

GRADING RESULTS

Carat Weight **2.77 CARATS**

Color Grade **D**

Clarity Grade **VVS 2**

Cut Grade **IDEAL**

June 3, 2026
IGI Report Number **LG807621916**
Description **LABORATORY GROWN DIAMOND**
Shape and Cutting Style **ROUND BRILLIANT**
Measurements **8.97 - 9.01 X 5.57 MM**

GRADING RESULTS

Carat Weight **2.77 CARATS**

Color Grade **D**

Clarity Grade **VVS 2**

Cut Grade **IDEAL**

ADDITIONAL GRADING INFORMATION

Polish **EXCELLENT**

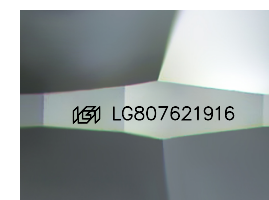
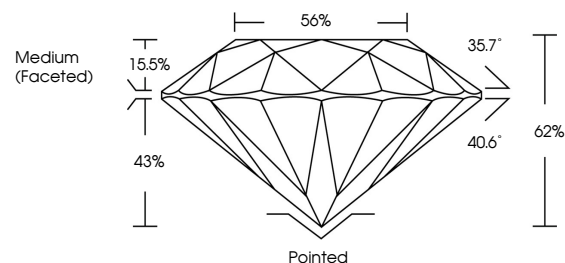
Symmetry **EXCELLENT**

Fluorescence **NONE**

Inscription(s) **IGI LG807621916**

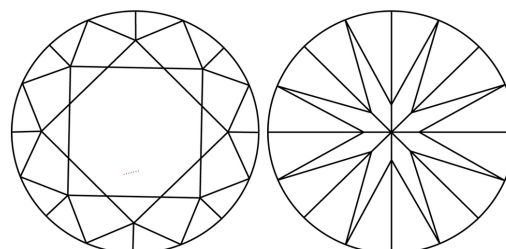
Comments: This Laboratory Grown Diamond was created by Chemical Vapor Deposition (CVD) growth process.
Type IIa

PROPORTIONS



Sample Image Used

CLARITY CHARACTERISTICS



KEY TO SYMBOLS

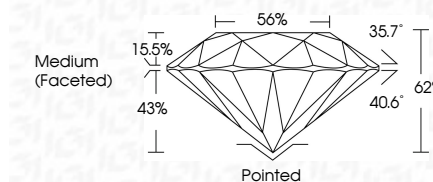
Red symbols indicate internal characteristics.
Green symbols indicate external characteristics.

COLOR

D E F G H I J Faint Very Light Light

CLARITY

FL	IF	VVS ¹⁻²	VS ¹⁻²	SI ¹⁻²	I ¹⁻³
Flawless	Internally Flawless	Very Very Slightly Included	Very Slightly Included	Slightly Included	Included



ADDITIONAL GRADING INFORMATION

Polish **EXCELLENT**

Symmetry **EXCELLENT**

Fluorescence **NONE**

Inscription(s) **IGI LG807621916**

Comments: This Laboratory Grown Diamond was created by Chemical Vapor Deposition (CVD) growth process.
Type IIa



IGI



June 3, 2026	IGI Report No LG807621916	2.77 CARATS	D	Pointed
ROUND BRILLIANT	8.97 - 9.01 X 5.57 MM	VVS 2	IDEAL	EXCELLENT
Color Grade	Clarity Grade	Depth	Cut Grade	Symmetry
D	VVS 2	62%	IDEAL	EXCELLENT
Medium (Faceted)	Fluorescence	Inscription(s)		
	NONE	IGI LG807621916		

Comments: This Laboratory Grown Diamond was created by Chemical Vapor Deposition (CVD) growth process.
Type IIa