



ELECTRONIC COPY

LG807621814 Report verification at igi.org



June 4, 2026 IGI Report Number LG807621814 Description LABORATORY GROWN DIAMOND Shape and Cutting Style ROUND BRILLIANT Measurements 7.38 - 7.43 X 4.56 MM GRADING RESULTS Carat Weight 1.54 CARAT Color Grade D Clarity Grade VS 1 Cut Grade IDEAL

June 4, 2026 IGI Report Number LG807621814 Description LABORATORY GROWN DIAMOND Shape and Cutting Style ROUND BRILLIANT Measurements 7.38 - 7.43 X 4.56 MM

GRADING RESULTS

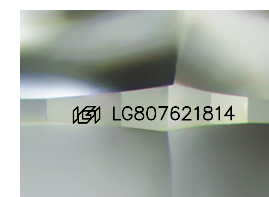
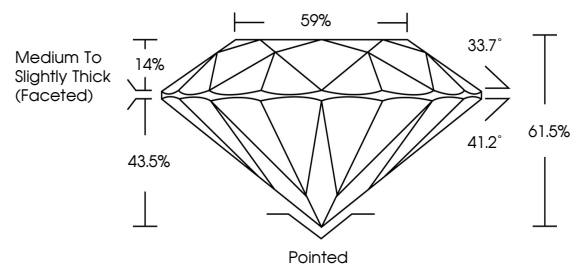
Carat Weight 1.54 CARAT Color Grade D Clarity Grade VS 1 Cut Grade IDEAL

ADDITIONAL GRADING INFORMATION

Polish EXCELLENT Symmetry EXCELLENT Fluorescence NONE Inscription(s) LG807621814

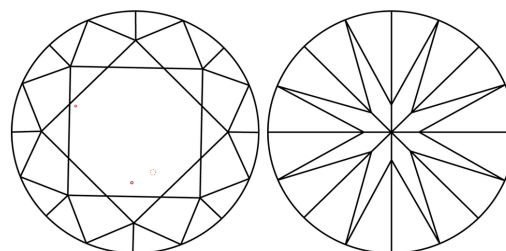
Comments: This Laboratory Grown Diamond was created by Chemical Vapor Deposition (CVD) growth process. Type IIa

PROPORTIONS



Sample Image Used

CLARITY CHARACTERISTICS



KEY TO SYMBOLS

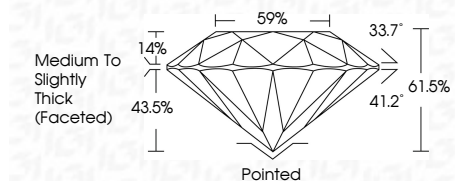
Red symbols indicate internal characteristics. Green symbols indicate external characteristics.

COLOR

D E F G H I J Faint Very Light Light

CLARITY

FL IF VS 1-2 VS 2-3 SI 1-2 I 1-3 Flawless Internally Flawless Very Very Slightly Included Very Slightly Included Slightly Included Included



ADDITIONAL GRADING INFORMATION

Polish EXCELLENT Symmetry EXCELLENT Fluorescence NONE Inscription(s) LG807621814 Comments: This Laboratory Grown Diamond was created by Chemical Vapor Deposition (CVD) growth process. Type IIa



June 4, 2026 IGI Report No LG807621814 ROUND BRILLIANT 1.54 CARAT D 7.38 - 7.43 X 4.56 MM VS 1 IDEAL 61.5% 59% Medium To Slightly Thick (Faceted) Pointed EXCELLENT EXCELLENT NONE LG807621814 Comments: This Laboratory Grown Diamond was created by Chemical Vapor Deposition (CVD) growth process. Type IIa