



**ELECTRONIC COPY**

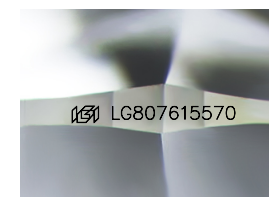
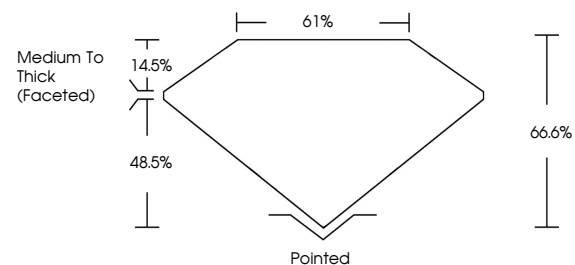
LG807615570  
Report verification at igi.org



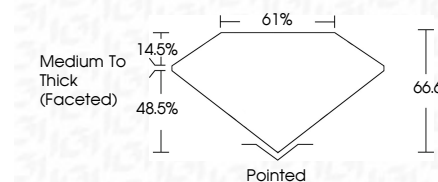
June 5, 2026  
IGI Report Number **LG807615570**  
Description **LABORATORY GROWN DIAMOND**  
Shape and Cutting Style **SQUARE CUSHION MODIFIED BRILLIANT**  
Measurements **7.10 X 7.07 X 4.71 MM**  
**GRADING RESULTS**  
Carat Weight **2.00 CARATS**  
Color Grade **D**  
Clarity Grade **VVS 2**

June 5, 2026  
IGI Report Number **LG807615570**  
Description **LABORATORY GROWN DIAMOND**  
Shape and Cutting Style **SQUARE CUSHION MODIFIED BRILLIANT**  
Measurements **7.10 X 7.07 X 4.71 MM**  
**GRADING RESULTS**  
Carat Weight **2.00 CARATS**  
Color Grade **D**  
Clarity Grade **VVS 2**

**PROPORTIONS**



Sample Image Used



**ADDITIONAL GRADING INFORMATION**

Polish **EXCELLENT**  
Symmetry **EXCELLENT**  
Fluorescence **NONE**  
Inscription(s) **IGI LG807615570**

Comments: As Grown - No indication of post-growth treatment.  
This Laboratory Grown Diamond was created by High Pressure High Temperature (HPHT) growth process.  
Type II

**ADDITIONAL GRADING INFORMATION**

Polish **EXCELLENT**  
Symmetry **EXCELLENT**  
Fluorescence **NONE**  
Inscription(s) **IGI LG807615570**  
Comments: As Grown - No indication of post-growth treatment.  
This Laboratory Grown Diamond was created by High Pressure High Temperature (HPHT) growth process.  
Type II

**COLOR**

D E F G H I J Faint Very Light Light

**CLARITY**

FL	IF	VVS <sup>1-2</sup>	VS <sup>1-2</sup>	SI <sup>1-2</sup>	I <sup>1-3</sup>
Flawless	Internally Flawless	Very Very Slightly Included	Very Slightly Included	Slightly Included	Included



**IGI**



June 5, 2026  
IGI Report No **LG807615570**  
**SQUARE CUSHION MODIFIED BRILLIANT**  
7.10 X 7.07 X 4.71 MM  
Carat Weight **2.00 CARATS**  
Color Grade **D**  
Clarity Grade **VVS 2**  
Depth **66.6%**  
Table **61%**  
Girdle **Medium To Thick (Faceted)**  
Culet **Pointed**  
Polish **EXCELLENT**  
Symmetry **EXCELLENT**  
Fluorescence **NONE**  
Inscription(s) **IGI LG807615570**  
Comments: As Grown - No indication of post-growth treatment.  
This Laboratory Grown Diamond was created by High Pressure High Temperature (HPHT) growth process.  
Type II