



ELECTRONIC COPY

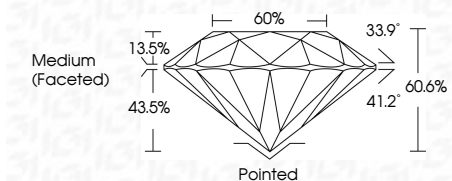
LG807612997 Report verification at igi.org



June 3, 2026 IGI Report Number LG807612997 Description LABORATORY GROWN DIAMOND Shape and Cutting Style ROUND BRILLIANT Measurements 8.21 - 8.24 X 4.99 MM

GRADING RESULTS

Carat Weight 2.07 CARATS Color Grade E Clarity Grade VVS 2 Cut Grade IDEAL



ADDITIONAL GRADING INFORMATION

Polish EXCELLENT Symmetry EXCELLENT Fluorescence NONE Inscription(s) IGI LG807612997 Comments: This Laboratory Grown Diamond was created by Chemical Vapor Deposition (CVD) growth process. Type IIa



June 3, 2026 IGI Report No LG807612997 ROUND BRILLIANT 8.21 - 8.24 X 4.99 MM 2.07 CARATS E Color Grade VVS 2 IDEAL 60.6% Depth 60% Medium (Faceted) Cutler Pointed EXCELLENT Polish EXCELLENT Symmetry EXCELLENT Fluorescence NONE Inscription(s) IGI LG807612997 Comments: This Laboratory Grown Diamond was created by Chemical Vapor Deposition (CVD) growth process. Type IIa

June 3, 2026 IGI Report Number LG807612997 Description LABORATORY GROWN DIAMOND Shape and Cutting Style ROUND BRILLIANT Measurements 8.21 - 8.24 X 4.99 MM

GRADING RESULTS

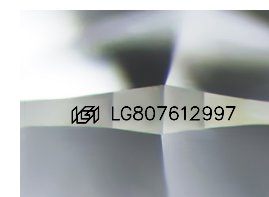
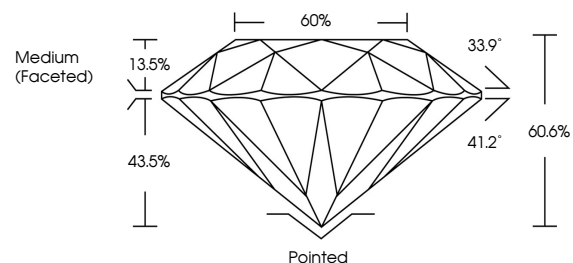
Carat Weight 2.07 CARATS Color Grade E Clarity Grade VVS 2 Cut Grade IDEAL

ADDITIONAL GRADING INFORMATION

Polish EXCELLENT Symmetry EXCELLENT Fluorescence NONE Inscription(s) IGI LG807612997

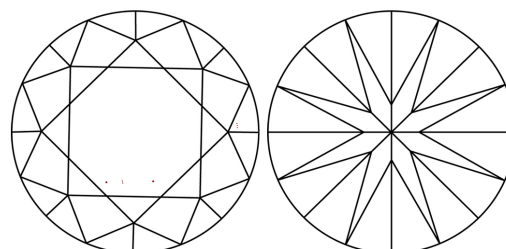
Comments: This Laboratory Grown Diamond was created by Chemical Vapor Deposition (CVD) growth process. Type IIa

PROPORTIONS



Sample Image Used

CLARITY CHARACTERISTICS



KEY TO SYMBOLS

Red symbols indicate internal characteristics. Green symbols indicate external characteristics.

COLOR

D E F G H I J Faint Very Light Light

CLARITY

FL IF VVS 1-2 VS 1-2 SI 1-2 I 1-3 Flawless Internally Flawless Very Very Slightly Included Very Slightly Included Slightly Included Included

