



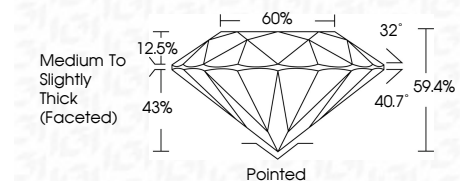
ELECTRONIC COPY

LG807612976 Report verification at igi.org



June 3, 2026 IGI Report Number LG807612976 Description LABORATORY GROWN DIAMOND Shape and Cutting Style ROUND BRILLIANT Measurements 8.21 - 8.25 X 4.89 MM

GRADING RESULTS Carat Weight 2.03 CARATS Color Grade F Clarity Grade VS 1 Cut Grade EXCELLENT



ADDITIONAL GRADING INFORMATION Polish EXCELLENT Symmetry EXCELLENT Fluorescence NONE Inscription(s) LG807612976 Comments: This Laboratory Grown Diamond was created by Chemical Vapor Deposition (CVD) growth process. Type IIa



June 3, 2026 IGI Report No LG807612976 ROUND BRILLIANT 8.21 - 8.25 X 4.89 MM 2.03 CARATS F Color Grade VS 1 EXCELLENT 43% 60% Medium To Slightly Thick (Faceted) Pointed EXCELLENT EXCELLENT NONE NONE LG807612976

LABORATORY GROWN DIAMOND REPORT

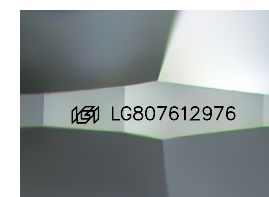
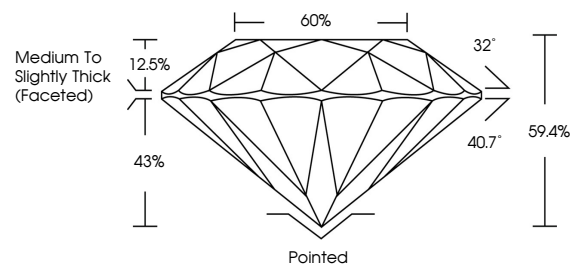
June 3, 2026 IGI Report Number LG807612976 Description LABORATORY GROWN DIAMOND Shape and Cutting Style ROUND BRILLIANT Measurements 8.21 - 8.25 X 4.89 MM

GRADING RESULTS Carat Weight 2.03 CARATS Color Grade F Clarity Grade VS 1 Cut Grade EXCELLENT

ADDITIONAL GRADING INFORMATION Polish EXCELLENT Symmetry EXCELLENT Fluorescence NONE Inscription(s) LG807612976

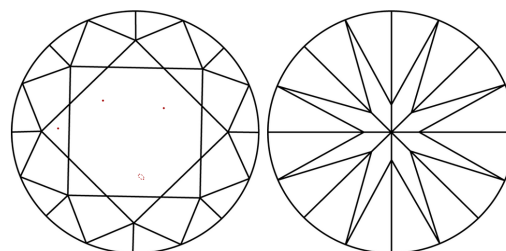
Comments: This Laboratory Grown Diamond was created by Chemical Vapor Deposition (CVD) growth process. Type IIa

PROPORTIONS



Sample Image Used

CLARITY CHARACTERISTICS



KEY TO SYMBOLS

Red symbols indicate internal characteristics. Green symbols indicate external characteristics.

COLOR

D E F G H I J Faint Very Light Light

CLARITY

FL IF VS 1-2 VS 1-2 SI 1-2 I 1-3 Flawless Internally Flawless Very Very Slightly Included Very Slightly Included Slightly Included Included

