



**LABORATORY GROWN DIAMOND REPORT**

June 8, 2026  
 IGI Report Number **LG807612490**  
 Description **LABORATORY GROWN DIAMOND**  
 Shape and Cutting Style **ROUND MODIFIED BRILLIANT**  
 Measurements **5.77 - 5.81 X 3.32 MM**

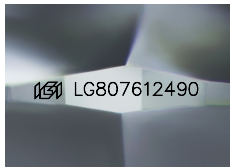
**GRADING RESULTS**

Carat Weight **0.75 CARAT**  
 Color Grade **E**  
 Clarity Grade **VS 1**

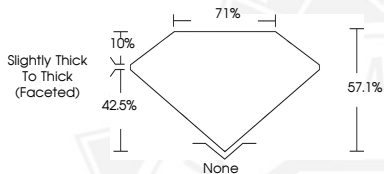
**ADDITIONAL GRADING INFORMATION**

Polish **VERY GOOD**  
 Symmetry **VERY GOOD**  
 Fluorescence **NONE**  
 Inscription(s) **IGI LG807612490**

Comments: This Laboratory Grown Diamond was created by Chemical Vapor Deposition (CVD) growth process. Type IIa



Sample Image Used



June 8, 2026  
 IGI Report Number **LG807612490**  
 ROUND MODIFIED BRILLIANT  
 LABORATORY GROWN DIAMOND  
 5.77 - 5.81 X 3.32 MM  
 Carat Weight **0.75 CARAT**  
 Color Grade **E**  
 Clarity Grade **VS 1**  
 Polish **VERY GOOD**  
 Symmetry **VERY GOOD**  
 Fluorescence **NONE**  
 Inscription(s) **IGI LG807612490**

Comments: This Laboratory Grown Diamond was created by Chemical Vapor Deposition (CVD) growth process. Type IIa



June 8, 2026  
 IGI Report Number **LG807612490**  
 ROUND MODIFIED BRILLIANT  
 LABORATORY GROWN DIAMOND  
 5.77 - 5.81 X 3.32 MM  
 Carat Weight **0.75 CARAT**  
 Color Grade **E**  
 Clarity Grade **VS 1**  
 Polish **VERY GOOD**  
 Symmetry **VERY GOOD**  
 Fluorescence **NONE**  
 Inscription(s) **IGI LG807612490**

Comments: This Laboratory Grown Diamond was created by Chemical Vapor Deposition (CVD) growth process. Type IIa



THIS DOCUMENT WAS PRODUCED WITH THE FOLLOWING SECURITY MEASURES: SPECIAL DOCUMENT PAPER, INK SCREENS, WATERMARK, BACKGROUND DESIGNS, HOLOGRAM AND OTHER SECURITY FEATURES NOT LISTED AND DO EXCEED DOCUMENT SECURITY INDUSTRY GUIDELINES.