



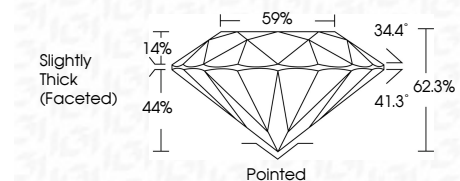
ELECTRONIC COPY

LG807608272 Report verification at igi.org



June 3, 2026 IGI Report Number LG807608272 Description LABORATORY GROWN DIAMOND Shape and Cutting Style ROUND BRILLIANT Measurements 6.55 - 6.59 X 4.09 MM

GRADING RESULTS Carat Weight 1.10 CARAT Color Grade D Clarity Grade VVS 2 Cut Grade EXCELLENT



ADDITIONAL GRADING INFORMATION Polish EXCELLENT Symmetry EXCELLENT Fluorescence NONE Inscription(s) LG807608272 Comments: This Laboratory Grown Diamond was created by Chemical Vapor Deposition (CVD) growth process. Type IIa



June 3, 2026 IGI Report No LG807608272 ROUND BRILLIANT 6.55 - 6.59 X 4.09 MM 1.10 CARAT D VVS 2 EXCELLENT 62.3% 59% Slightly Thick (Faceted) Pointed EXCELLENT EXCELLENT NONE NONE LG807608272 Comments: This Laboratory Grown Diamond was created by Chemical Vapor Deposition (CVD) growth process. Type IIa

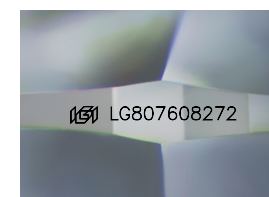
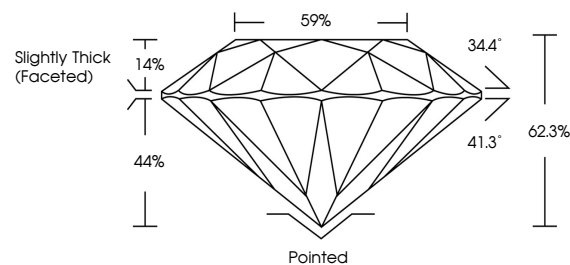
June 3, 2026 IGI Report Number LG807608272 Description LABORATORY GROWN DIAMOND Shape and Cutting Style ROUND BRILLIANT Measurements 6.55 - 6.59 X 4.09 MM

GRADING RESULTS Carat Weight 1.10 CARAT Color Grade D Clarity Grade VVS 2 Cut Grade EXCELLENT

ADDITIONAL GRADING INFORMATION Polish EXCELLENT Symmetry EXCELLENT Fluorescence NONE Inscription(s) LG807608272

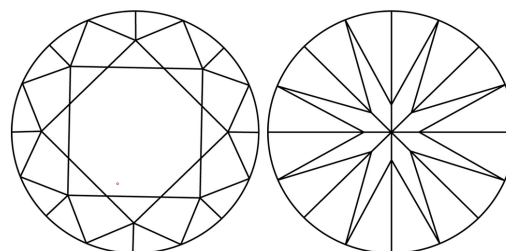
Comments: This Laboratory Grown Diamond was created by Chemical Vapor Deposition (CVD) growth process. Type IIa

PROPORTIONS



Sample Image Used

CLARITY CHARACTERISTICS



KEY TO SYMBOLS

Red symbols indicate internal characteristics. Green symbols indicate external characteristics.

COLOR

D E F G H I J Faint Very Light Light

CLARITY

FL IF VVS 1-2 VS 1-2 SI 1-2 I 1-3 Flawless Internally Flawless Very Very Slightly Included Very Slightly Included Slightly Included Included