



ELECTRONIC COPY

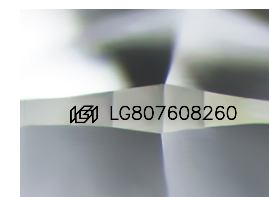
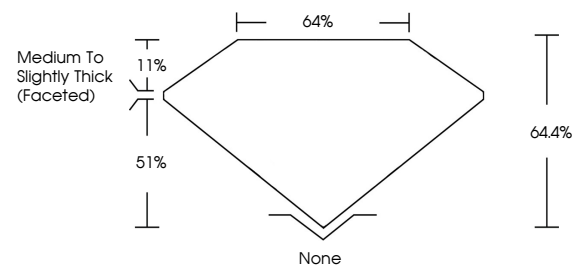
LG807608260
Report verification at igi.org



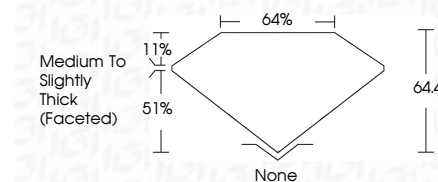
June 6, 2026
IGI Report Number **LG807608260**
Description **LABORATORY GROWN DIAMOND**
Shape and Cutting Style **CUSHION MODIFIED BRILLIANT**
Measurements **6.97 X 5.71 X 3.68 MM**
GRADING RESULTS
Carat Weight **1.09 CARAT**
Color Grade **FANCY VIVID PINK**
Clarity Grade **VVS 2**

June 6, 2026
IGI Report Number **LG807608260**
Description **LABORATORY GROWN DIAMOND**
Shape and Cutting Style **CUSHION MODIFIED BRILLIANT**
Measurements **6.97 X 5.71 X 3.68 MM**
GRADING RESULTS
Carat Weight **1.09 CARAT**
Color Grade **FANCY VIVID PINK**
Clarity Grade **VVS 2**

PROPORTIONS



Sample Image Used



ADDITIONAL GRADING INFORMATION

Polish **VERY GOOD**
Symmetry **GOOD**
Fluorescence **STRONG**
Inscription(s) **IGI LG807608260**

Comments: This Laboratory Grown Diamond was created by Chemical Vapor Deposition (CVD) growth process. Indications of post-growth treatment.

ADDITIONAL GRADING INFORMATION

Polish **VERY GOOD**
Symmetry **GOOD**
Fluorescence **STRONG**
Inscription(s) **IGI LG807608260**

Comments: This Laboratory Grown Diamond was created by Chemical Vapor Deposition (CVD) growth process. Indications of post-growth treatment.

COLOR

D E F G H I J Faint Very Light Light

CLARITY

FL	IF	VS ¹⁻²	VS ¹⁻²	SI ¹⁻²	I ¹⁻³
Flawless	Internally Flawless	Very Very Slightly Included	Very Slightly Included	Slightly Included	Included



IGI



June 6, 2026
IGI Report No **LG807608260**
CUSHION MODIFIED BRILLIANT
6.97 X 5.71 X 3.68 MM
1.09 CARAT
FANCY VIVID PINK
VVS 2
64.4%
64.4%
Medium to Slightly Thick (Faceted)
None
VERY GOOD
GOOD
STRONG
IGI LG807608260

Comments: This Laboratory Grown Diamond was created by Chemical Vapor Deposition (CVD) growth process. Indications of post-growth treatment.