



ELECTRONIC COPY

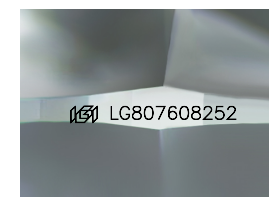
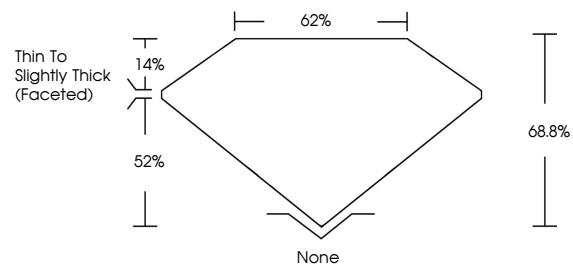
LG807608252
Report verification at igi.org



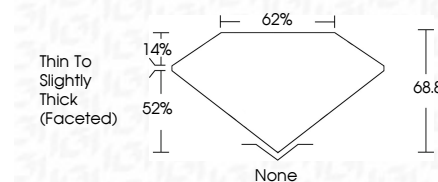
June 6, 2026
IGI Report Number **LG807608252**
Description **LABORATORY GROWN DIAMOND**
Shape and Cutting Style **CUSHION MODIFIED BRILLIANT**
Measurements **6.63 X 5.51 X 3.79 MM**
GRADING RESULTS
Carat Weight **1.05 CARAT**
Color Grade **FANCY VIVID PINK**
Clarity Grade **VVS 2**

June 6, 2026
IGI Report Number **LG807608252**
Description **LABORATORY GROWN DIAMOND**
Shape and Cutting Style **CUSHION MODIFIED BRILLIANT**
Measurements **6.63 X 5.51 X 3.79 MM**
GRADING RESULTS
Carat Weight **1.05 CARAT**
Color Grade **FANCY VIVID PINK**
Clarity Grade **VVS 2**

PROPORTIONS



Sample Image Used



ADDITIONAL GRADING INFORMATION

Polish **EXCELLENT**
Symmetry **VERY GOOD**
Fluorescence **STRONG**
Inscription(s) **IGI LG807608252**

Comments: This Laboratory Grown Diamond was created by Chemical Vapor Deposition (CVD) growth process. Indications of post-growth treatment.

ADDITIONAL GRADING INFORMATION

Polish **EXCELLENT**
Symmetry **VERY GOOD**
Fluorescence **STRONG**
Inscription(s) **IGI LG807608252**

Comments: This Laboratory Grown Diamond was created by Chemical Vapor Deposition (CVD) growth process. Indications of post-growth treatment.

COLOR

D E F G H I J Faint Very Light Light

CLARITY

FL	IF	VVS ¹⁻²	VS ¹⁻²	SI ¹⁻²	I ¹⁻³
Flawless	Internally Flawless	Very Very Slightly Included	Very Slightly Included	Slightly Included	Included



IGI



June 6, 2026
IGI Report No **LG807608252**
CUSHION MODIFIED BRILLIANT
6.63 X 5.51 X 3.79 MM
1.05 CARAT
FANCY VIVID PINK
VVS 2
68.8%
62%
Thin To Slightly Thick (Faceted)
None
EXCELLENT
VERY GOOD
STRONG
IGI LG807608252

Comments: This Laboratory Grown Diamond was created by Chemical Vapor Deposition (CVD) growth process. Indications of post-growth treatment.