



ELECTRONIC COPY

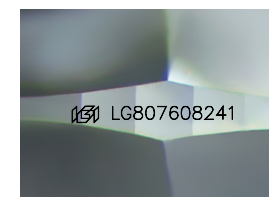
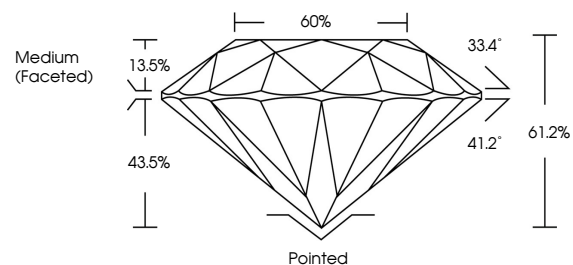
LG807608241
Report verification at igi.org



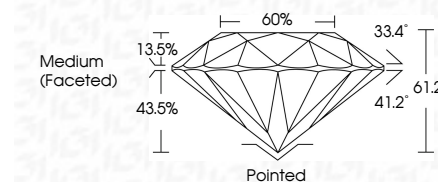
June 6, 2026
IGI Report Number **LG807608241**
Description **LABORATORY GROWN DIAMOND**
Shape and Cutting Style **ROUND BRILLIANT**
Measurements **6.61 - 6.64 X 4.05 MM**
GRADING RESULTS
Carat Weight **1.10 CARAT**
Color Grade **FANCY VIVID PINK**
Clarity Grade **VVS 2**
Cut Grade **IDEAL**

June 6, 2026
IGI Report Number **LG807608241**
Description **LABORATORY GROWN DIAMOND**
Shape and Cutting Style **ROUND BRILLIANT**
Measurements **6.61 - 6.64 X 4.05 MM**
GRADING RESULTS
Carat Weight **1.10 CARAT**
Color Grade **FANCY VIVID PINK**
Clarity Grade **VVS 2**
Cut Grade **IDEAL**

PROPORTIONS



Sample Image Used



ADDITIONAL GRADING INFORMATION

Polish **VERY GOOD**
Symmetry **EXCELLENT**
Fluorescence **SLIGHT**
Inscription(s) **IGI LG807608241**

Comments: This Laboratory Grown Diamond was created by Chemical Vapor Deposition (CVD) growth process. Indications of post-growth treatment.

COLOR

D E F G H I J Faint Very Light Light

CLARITY

FL	IF	VVS ¹⁻²	VS ¹⁻²	SI ¹⁻²	I ¹⁻³
Flawless	Internally Flawless	Very Very Slightly Included	Very Slightly Included	Slightly Included	Included

ADDITIONAL GRADING INFORMATION

Polish **VERY GOOD**
Symmetry **EXCELLENT**
Fluorescence **SLIGHT**
Inscription(s) **IGI LG807608241**
Comments: This Laboratory Grown Diamond was created by Chemical Vapor Deposition (CVD) growth process. Indications of post-growth treatment.



June 6, 2026
IGI Report No LG807608241
ROUND BRILLIANT
6.61 - 6.64 X 4.05 MM
1.10 CARAT
FANCY VIVID PINK
VVS 2
IDEAL
61.2%
60%
Medium (Faceted)
Pointed
VERY GOOD
EXCELLENT
SLIGHT
IGI LG807608241
Comments: This Laboratory Grown Diamond was created by Chemical Vapor Deposition (CVD) growth process. Indications of post-growth treatment.