



ELECTRONIC COPY

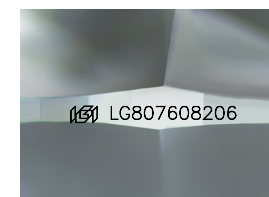
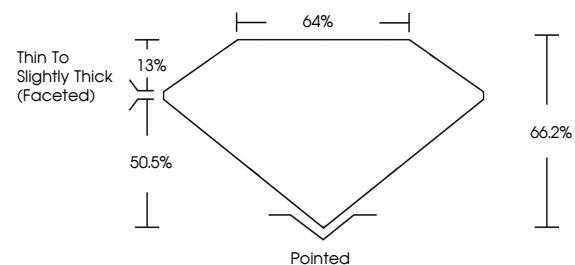
LG807608206
Report verification at igi.org



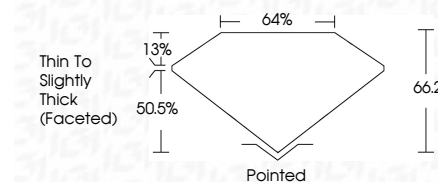
June 6, 2026
IGI Report Number **LG807608206**
Description **LABORATORY GROWN DIAMOND**
Shape and Cutting Style **CUSHION MODIFIED BRILLIANT**
Measurements **6.91 X 5.62 X 3.72 MM**
GRADING RESULTS
Carat Weight **1.10 CARAT**
Color Grade **FANCY VIVID PINK**
Clarity Grade **VVS 2**

June 6, 2026
IGI Report Number **LG807608206**
Description **LABORATORY GROWN DIAMOND**
Shape and Cutting Style **CUSHION MODIFIED BRILLIANT**
Measurements **6.91 X 5.62 X 3.72 MM**
GRADING RESULTS
Carat Weight **1.10 CARAT**
Color Grade **FANCY VIVID PINK**
Clarity Grade **VVS 2**

PROPORTIONS



Sample Image Used



ADDITIONAL GRADING INFORMATION

Polish **VERY GOOD**
Symmetry **VERY GOOD**
Fluorescence **STRONG**
Inscription(s) **IGI LG807608206**

Comments: This Laboratory Grown Diamond was created by Chemical Vapor Deposition (CVD) growth process. Indications of post-growth treatment.

ADDITIONAL GRADING INFORMATION

Polish **VERY GOOD**
Symmetry **VERY GOOD**
Fluorescence **STRONG**
Inscription(s) **IGI LG807608206**

Comments: This Laboratory Grown Diamond was created by Chemical Vapor Deposition (CVD) growth process. Indications of post-growth treatment.

COLOR

D E F G H I J Faint Very Light Light

CLARITY

FL	IF	VVS ¹⁻²	VS ¹⁻²	SI ¹⁻²	I ¹⁻³
Flawless	Internally Flawless	Very Very Slightly Included	Very Slightly Included	Slightly Included	Included



IGI



June 6, 2026
IGI Report No **LG807608206**
CUSHION MODIFIED BRILLIANT

1.10 CARAT
Carat Weight
FANCY VIVID PINK
Color Grade
VVS 2
Clarity Grade
66.2%
Table
64%
Girdle
Thin To Slightly Thick (Faceted)
Culet
Pointed
Polish
VERY GOOD
Symmetry
VERY GOOD
Fluorescence
STRONG
Inscription(s)
IGI LG807608206

Comments: This Laboratory Grown Diamond was created by Chemical Vapor Deposition (CVD) growth process. Indications of post-growth treatment.