



**ELECTRONIC COPY**

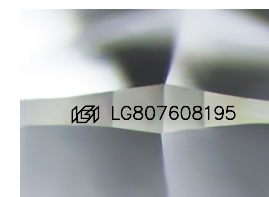
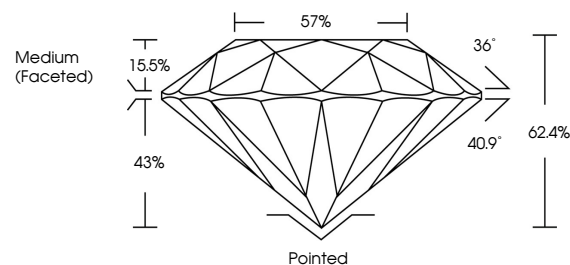
LG807608195  
Report verification at igi.org



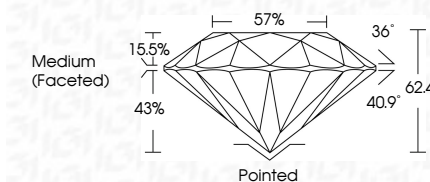
June 5, 2026  
IGI Report Number **LG807608195**  
Description **LABORATORY GROWN DIAMOND**  
Shape and Cutting Style **ROUND BRILLIANT**  
Measurements **6.49 - 6.53 X 4.07 MM**  
**GRADING RESULTS**  
Carat Weight **1.06 CARAT**  
Color Grade **FANCY VIVID PINK**  
Clarity Grade **VS 1**  
Cut Grade **IDEAL**

June 5, 2026  
IGI Report Number **LG807608195**  
Description **LABORATORY GROWN DIAMOND**  
Shape and Cutting Style **ROUND BRILLIANT**  
Measurements **6.49 - 6.53 X 4.07 MM**  
**GRADING RESULTS**  
Carat Weight **1.06 CARAT**  
Color Grade **FANCY VIVID PINK**  
Clarity Grade **VS 1**  
Cut Grade **IDEAL**

**PROPORTIONS**



Sample Image Used



**ADDITIONAL GRADING INFORMATION**

Polish **EXCELLENT**  
Symmetry **EXCELLENT**  
Fluorescence **SLIGHT**  
Inscription(s) **IGI LG807608195**

Comments: This Laboratory Grown Diamond was created by Chemical Vapor Deposition (CVD) growth process. Indications of post-growth treatment.

**COLOR**

D E F G H I J Faint Very Light Light

**CLARITY**

FL	IF	VS <sup>1-2</sup>	VS <sup>1-2</sup>	SI <sup>1-2</sup>	I <sup>1-3</sup>
Flawless	Internally Flawless	Very Very Slightly Included	Very Slightly Included	Slightly Included	Included

**ADDITIONAL GRADING INFORMATION**

Polish **EXCELLENT**  
Symmetry **EXCELLENT**  
Fluorescence **SLIGHT**  
Inscription(s) **IGI LG807608195**  
Comments: This Laboratory Grown Diamond was created by Chemical Vapor Deposition (CVD) growth process. Indications of post-growth treatment.



June 5, 2026  
IGI Report No LG807608195  
**ROUND BRILLIANT**  
6.49 - 6.53 X 4.07 MM  
1.06 CARAT  
FANCY VIVID PINK  
VS 1  
IDEAL  
62.4%  
57%  
Medium (Faceted)  
Pointed  
EXCELLENT  
EXCELLENT  
SLIGHT  
IGI LG807608195  
Comments: This Laboratory Grown Diamond was created by Chemical Vapor Deposition (CVD) growth process. Indications of post-growth treatment.