



ELECTRONIC COPY

LG807607806 Report verification at igi.org



June 3, 2026 IGI Report Number LG807607806 Description LABORATORY GROWN DIAMOND Shape and Cutting Style ROUND BRILLIANT Measurements 6.39 - 6.47 X 4.02 MM GRADING RESULTS Carat Weight 1.02 CARAT Color Grade G Clarity Grade VVS 1 Cut Grade EXCELLENT

June 3, 2026 IGI Report Number LG807607806 Description LABORATORY GROWN DIAMOND Shape and Cutting Style ROUND BRILLIANT Measurements 6.39 - 6.47 X 4.02 MM

GRADING RESULTS

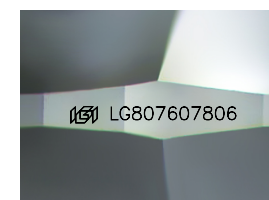
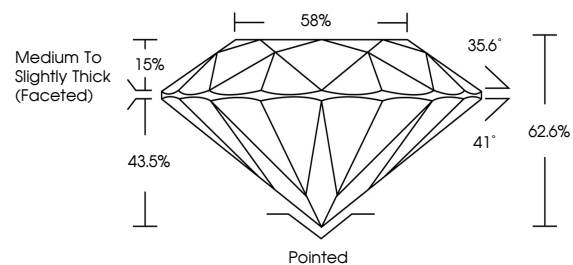
Carat Weight 1.02 CARAT Color Grade G Clarity Grade VVS 1 Cut Grade EXCELLENT

ADDITIONAL GRADING INFORMATION

Polish EXCELLENT Symmetry EXCELLENT Fluorescence NONE Inscription(s) LG807607806

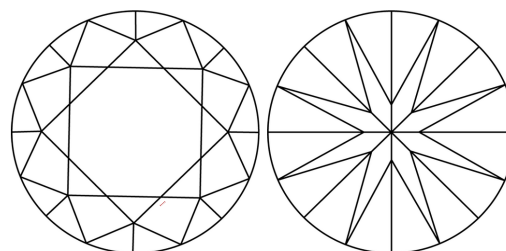
Comments: This Laboratory Grown Diamond was created by Chemical Vapor Deposition (CVD) growth process. Type IIa

PROPORTIONS



Sample Image Used

CLARITY CHARACTERISTICS



KEY TO SYMBOLS

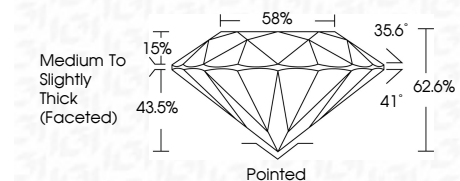
Red symbols indicate internal characteristics. Green symbols indicate external characteristics.

COLOR

D E F G H I J Faint Very Light Light

CLARITY

FL IF VVS 1-2 VS 1-2 SI 1-2 I 1-3 Flawless Internally Flawless Very Very Slightly Included Very Slightly Included Slightly Included Included



ADDITIONAL GRADING INFORMATION

Polish EXCELLENT Symmetry EXCELLENT Fluorescence NONE Inscription(s) LG807607806 Comments: This Laboratory Grown Diamond was created by Chemical Vapor Deposition (CVD) growth process. Type IIa



June 3, 2026 IGI Report No LG807607806 ROUND BRILLIANT 6.39 - 6.47 X 4.02 MM 1.02 CARAT G VVS 1 EXCELLENT 62.6% 58% Medium To Slightly Thick (Faceted) Pointed EXCELLENT EXCELLENT NONE NONE LG807607806 Comments: This Laboratory Grown Diamond was created by Chemical Vapor Deposition (CVD) growth process. Type IIa