



ELECTRONIC COPY

LG807607626
Report verification at igi.org



June 4, 2026
IGI Report Number **LG807607626**
Description **LABORATORY GROWN DIAMOND**
Shape and Cutting Style **ROUND BRILLIANT**
Measurements **6.56 - 6.58 X 4.00 MM**
GRADING RESULTS
Carat Weight **1.05 CARAT**
Color Grade **D**
Clarity Grade **INTERNALLY FLAWLESS**
Cut Grade **IDEAL**

June 4, 2026
IGI Report Number **LG807607626**
Description **LABORATORY GROWN DIAMOND**
Shape and Cutting Style **ROUND BRILLIANT**
Measurements **6.56 - 6.58 X 4.00 MM**

GRADING RESULTS

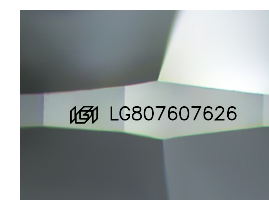
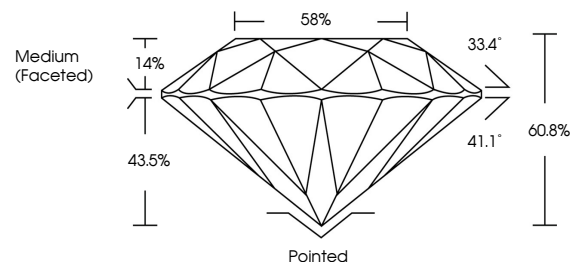
Carat Weight **1.05 CARAT**
Color Grade **D**
Clarity Grade **INTERNALLY FLAWLESS**
Cut Grade **IDEAL**

ADDITIONAL GRADING INFORMATION

Polish **EXCELLENT**
Symmetry **EXCELLENT**
Fluorescence **NONE**
Inscription(s) **IGI LG807607626**

Comments: As Grown - No indication of post-growth treatment.
This Laboratory Grown Diamond was created by High Pressure High Temperature (HPHT) growth process.
Type II

PROPORTIONS



Sample Image Used

CLARITY CHARACTERISTICS



KEY TO SYMBOLS

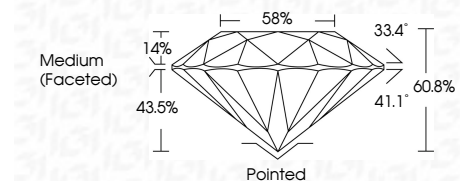
Red symbols indicate internal characteristics.
Green symbols indicate external characteristics.

COLOR

D E F G H I J Faint Very Light Light

CLARITY

FL	IF	VS ¹⁻²	VS ¹⁻²	SI ¹⁻²	I ¹⁻³
Flawless	Internally Flawless	Very Very Slightly Included	Very Slightly Included	Slightly Included	Included



ADDITIONAL GRADING INFORMATION

Polish **EXCELLENT**
Symmetry **EXCELLENT**
Fluorescence **NONE**
Inscription(s) **IGI LG807607626**
Comments: As Grown - No indication of post-growth treatment.
This Laboratory Grown Diamond was created by High Pressure High Temperature (HPHT) growth process.
Type II



IGI



June 4, 2026
IGI Report No LG807607626
ROUND BRILLIANT
6.56 - 6.58 X 4.00 MM
1.05 CARAT
D
D
IDEAL
60.8%
58%
Medium (Faceted)
Pointed
EXCELLENT
EXCELLENT
NONE
IGI LG807607626
Comments: As Grown - No indication of post-growth treatment.
This Laboratory Grown Diamond was created by High Pressure High Temperature (HPHT) growth process.
Type II