



**ELECTRONIC COPY**

LG807606428  
Report verification at igi.org



June 6, 2026  
IGI Report Number **LG807606428**  
Description **LABORATORY GROWN DIAMOND**  
Shape and Cutting Style **CUSHION MODIFIED BRILLIANT**  
Measurements **9.18 X 6.57 X 4.68 MM**  
**GRADING RESULTS**  
Carat Weight **2.09 CARATS**  
Color Grade **D**  
Clarity Grade **VVS 2**

**LABORATORY GROWN DIAMOND REPORT**

June 6, 2026  
IGI Report Number **LG807606428**  
Description **LABORATORY GROWN DIAMOND**  
Shape and Cutting Style **CUSHION MODIFIED BRILLIANT**  
Measurements **9.18 X 6.57 X 4.68 MM**

**GRADING RESULTS**

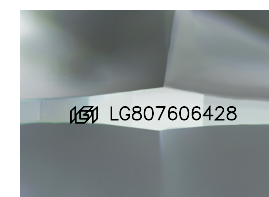
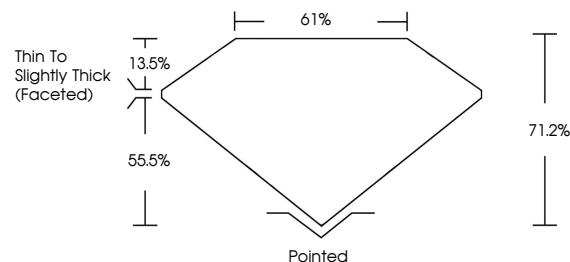
Carat Weight **2.09 CARATS**  
Color Grade **D**  
Clarity Grade **VVS 2**

**ADDITIONAL GRADING INFORMATION**

Polish **EXCELLENT**  
Symmetry **EXCELLENT**  
Fluorescence **NONE**  
Inscription(s) **IGI LG807606428**

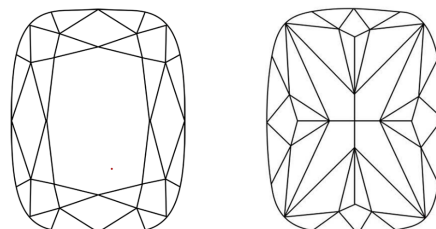
Comments: This Laboratory Grown Diamond was created by Chemical Vapor Deposition (CVD) growth process.  
Type IIa

**PROPORTIONS**



Sample Image Used

**CLARITY CHARACTERISTICS**



**KEY TO SYMBOLS**

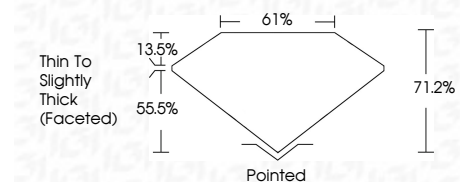
Red symbols indicate internal characteristics.  
Green symbols indicate external characteristics.

**COLOR**

D E F G H I J Faint Very Light Light

**CLARITY**

FL	IF	VVS <sup>1-2</sup>	VS <sup>1-2</sup>	SI <sup>1-2</sup>	I <sup>1-3</sup>
Flawless	Internally Flawless	Very Very Slightly Included	Very Slightly Included	Slightly Included	Included



**ADDITIONAL GRADING INFORMATION**

Polish **EXCELLENT**  
Symmetry **EXCELLENT**  
Fluorescence **NONE**  
Inscription(s) **IGI LG807606428**  
Comments: This Laboratory Grown Diamond was created by Chemical Vapor Deposition (CVD) growth process.  
Type IIa



June 6, 2026  
IGI Report No **LG807606428**  
**CUSHION MODIFIED BRILLIANT**  
**9.18 X 6.57 X 4.68 MM**  
Carat Weight **2.09 CARATS**  
Color Grade **D**  
Clarity Grade **VVS 2**  
Depth **71.2%**  
Table **61%**  
Girdle **Thin to Slightly Thick (Faceted)**  
Culet **Pointed**  
Polish **EXCELLENT**  
Symmetry **EXCELLENT**  
Fluorescence **NONE**  
Inscription(s) **IGI LG807606428**  
Comments: This Laboratory Grown Diamond was created by Chemical Vapor Deposition (CVD) growth process.  
Type IIa