



ELECTRONIC COPY

LG807606190
Report verification at igi.org



June 3, 2026
IGI Report Number LG807606190
Description LABORATORY GROWN DIAMOND
Shape and Cutting Style CUT CORNERED RECTANGULAR MODIFIED BRILLIANT
Measurements 6.74 X 4.81 X 3.30 MM
GRADING RESULTS
Carat Weight 0.90 CARAT
Color Grade D
Clarity Grade VVS 2

LABORATORY GROWN DIAMOND REPORT

June 3, 2026
IGI Report Number LG807606190
Description LABORATORY GROWN DIAMOND
Shape and Cutting Style CUT CORNERED RECTANGULAR MODIFIED BRILLIANT
Measurements 6.74 X 4.81 X 3.30 MM

GRADING RESULTS

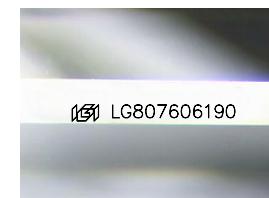
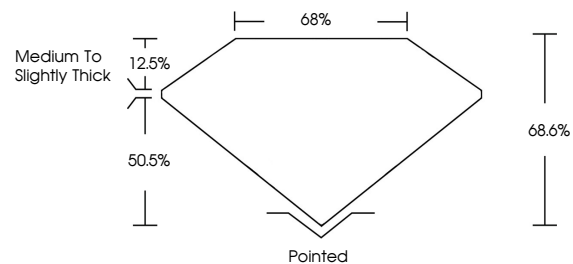
Carat Weight 0.90 CARAT
Color Grade D
Clarity Grade VVS 2

ADDITIONAL GRADING INFORMATION

Polish VERY GOOD
Symmetry VERY GOOD
Fluorescence NONE
Inscription(s) LG807606190

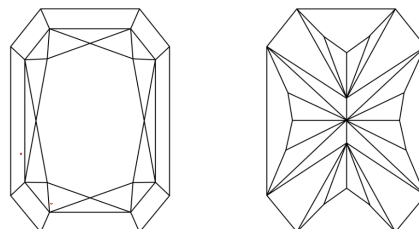
Comments: This Laboratory Grown Diamond was created by Chemical Vapor Deposition (CVD) growth process. Type IIa

PROPORTIONS



Sample Image Used

CLARITY CHARACTERISTICS



KEY TO SYMBOLS

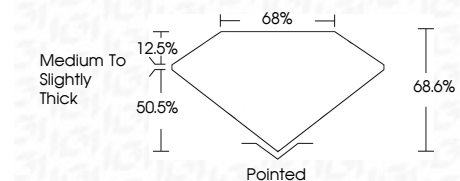
Red symbols indicate internal characteristics.
Green symbols indicate external characteristics.

COLOR

D E F G H I J Faint Very Light Light

CLARITY

FL IF VVS 1-2 VS 1-2 SI 1-2 I 1-3
Flawless Internally Flawless Very Very Slightly Included Very Slightly Included Slightly Included Included



ADDITIONAL GRADING INFORMATION

Polish VERY GOOD
Symmetry VERY GOOD
Fluorescence NONE
Inscription(s) LG807606190
Comments: This Laboratory Grown Diamond was created by Chemical Vapor Deposition (CVD) growth process. Type IIa



June 3, 2026
IGI Report No LG807606190
CUT CORNERED RECT. MODIFIED BRILLIANT
0.90 CARAT D
6.74 X 4.81 X 3.30 MM
Color Grade D
Clarity Grade VVS 2
Table 68.6%
Girdle 65%
Medium to Slightly Thick
Culet Pointed
Polish VERY GOOD
Symmetry VERY GOOD
Fluorescence NONE
Inscription(s) LG807606190
Comments: This Laboratory Grown Diamond was created by Chemical Vapor Deposition (CVD) growth process. Type IIa