



ELECTRONIC COPY

LG807605781
Report verification at igi.org



June 5, 2026

IGI Report Number LG807605781

Description LABORATORY GROWN DIAMOND

Shape and Cutting Style CUT CORNERED RECTANGULAR MODIFIED BRILLIANT

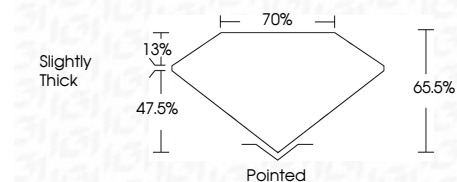
Measurements 15.74 X 10.65 X 6.98 MM

GRADING RESULTS

Carat Weight 10.52 CARATS

Color Grade G

Clarity Grade VVS 2



ADDITIONAL GRADING INFORMATION

Polish EXCELLENT

Symmetry EXCELLENT

Fluorescence NONE

Inscription(s) IGI LG807605781

Comments: This Laboratory Grown Diamond was created by Chemical Vapor Deposition (CVD) growth process. Type IIa



June 5, 2026

IGI Report Number LG807605781

Description LABORATORY GROWN DIAMOND

Shape and Cutting Style CUT CORNERED RECTANGULAR MODIFIED BRILLIANT

Measurements 15.74 X 10.65 X 6.98 MM

GRADING RESULTS

Carat Weight 10.52 CARATS

Color Grade G

Clarity Grade VVS 2

ADDITIONAL GRADING INFORMATION

Polish EXCELLENT

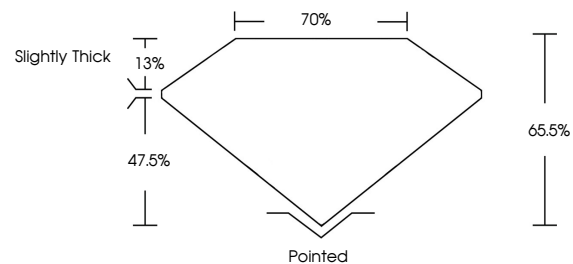
Symmetry EXCELLENT

Fluorescence NONE

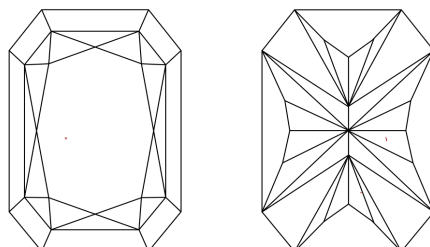
Inscription(s) IGI LG807605781

Comments: This Laboratory Grown Diamond was created by Chemical Vapor Deposition (CVD) growth process. Type IIa

PROPORTIONS

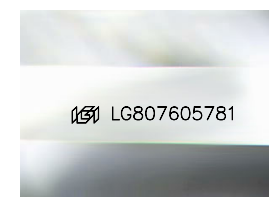


CLARITY CHARACTERISTICS



KEY TO SYMBOLS

Red symbols indicate internal characteristics. Green symbols indicate external characteristics.



Sample Image Used

COLOR

D E F G H I J Faint Very Light Light

CLARITY

FL IF VVS 1-2 VS 1-2 SI 1-2 I 1-3
Flawless Internally Flawless Very Very Slightly Included Very Slightly Included Slightly Included Included

Summary of report details including date, report number, description, measurements, grading results, and additional information.

Comments: This Laboratory Grown Diamond was created by Chemical Vapor Deposition (CVD) growth process. Type IIa