



ELECTRONIC COPY

LG806631150
Report verification at igi.org



June 3, 2026

IGI Report Number **LG806631150**

Description **LABORATORY GROWN DIAMOND**

Shape and Cutting Style **CUT CORNERED
RECTANGULAR MODIFIED
BRILLIANT**

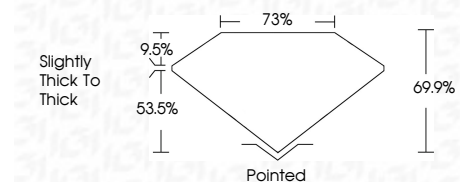
Measurements **11.54 X 5.99 X 4.19 MM**

GRADING RESULTS

Carat Weight **2.58 CARATS**

Color Grade **E**

Clarity Grade **VVS 2**



ADDITIONAL GRADING INFORMATION

Polish **EXCELLENT**

Symmetry **EXCELLENT**

Fluorescence **NONE**

Inscription(s) **IGI LG806631150**

Comments: This Laboratory Grown Diamond was created by Chemical Vapor Deposition (CVD) growth process. Type IIa



IGI

June 3, 2026

IGI Report Number **LG806631150**

Description **LABORATORY GROWN DIAMOND**

Shape and Cutting Style **CUT CORNERED RECTANGULAR
MODIFIED BRILLIANT**

Measurements **11.54 X 5.99 X 4.19 MM**

GRADING RESULTS

Carat Weight **2.58 CARATS**

Color Grade **E**

Clarity Grade **VVS 2**

ADDITIONAL GRADING INFORMATION

Polish **EXCELLENT**

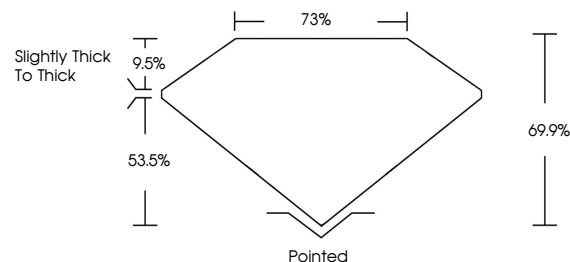
Symmetry **EXCELLENT**

Fluorescence **NONE**

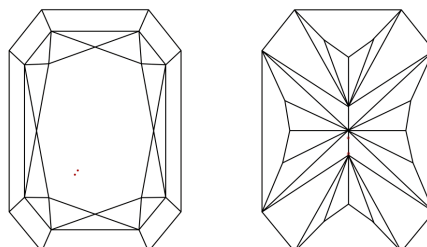
Inscription(s) **IGI LG806631150**

Comments: This Laboratory Grown Diamond was created by Chemical Vapor Deposition (CVD) growth process. Type IIa

PROPORTIONS

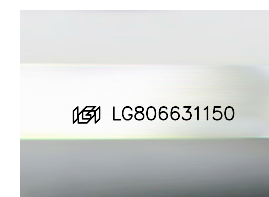


CLARITY CHARACTERISTICS



KEY TO SYMBOLS

Red symbols indicate internal characteristics.
Green symbols indicate external characteristics.



Sample Image Used

COLOR

D E F G H I J Faint Very Light Light

CLARITY

FL	IF	VVS ¹⁻²	VS ¹⁻²	SI ¹⁻²	I ¹⁻³
Flawless	Internally Flawless	Very Very Slightly Included	Very Slightly Included	Slightly Included	Included



June 3, 2026
IGI Report No. LG806631150
CUT CORNERED RECT. MODIFIED BRILLIANT
11.54 X 5.99 X 4.19 MM
Carat Weight 2.58 CARATS
Color Grade E
Clarity Grade VVS 2
Depth 69.9%
Table 53.5%
Girdle Slightly thick to thick
Culet Pointed
Polish EXCELLENT
Symmetry EXCELLENT
Fluorescence NONE
Inscription(s) IGI LG806631150
Comments: This Laboratory Grown Diamond was created by Chemical Vapor Deposition (CVD) growth process. Type IIa