



ELECTRONIC COPY

LG806628576 Report verification at igi.org



June 2, 2026 IGI Report Number LG806628576 Description LABORATORY GROWN DIAMOND Shape and Cutting Style TRIANGULAR MODIFIED BRILLIANT Measurements 7.94 X 8.59 X 4.80 MM GRADING RESULTS Carat Weight 1.55 CARAT Color Grade D Clarity Grade VVS 2

LABORATORY GROWN DIAMOND REPORT

June 2, 2026 IGI Report Number LG806628576 Description LABORATORY GROWN DIAMOND Shape and Cutting Style TRIANGULAR MODIFIED BRILLIANT Measurements 7.94 X 8.59 X 4.80 MM

GRADING RESULTS

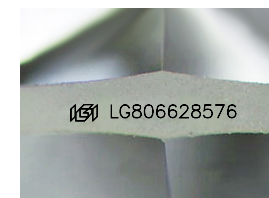
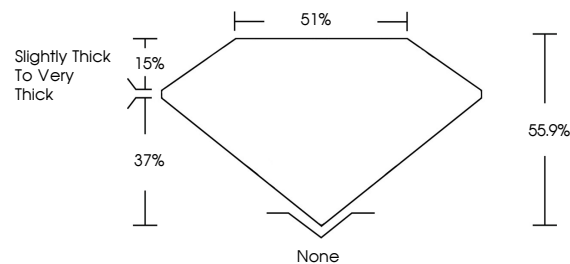
Carat Weight 1.55 CARAT Color Grade D Clarity Grade VVS 2

ADDITIONAL GRADING INFORMATION

Polish EXCELLENT Symmetry EXCELLENT Fluorescence NONE Inscription(s) LG806628576

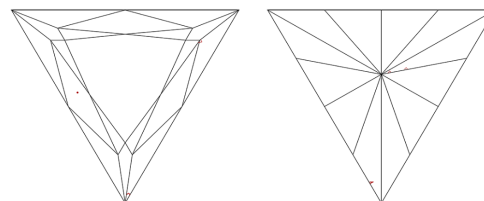
Comments: This Laboratory Grown Diamond was created by Chemical Vapor Deposition (CVD) growth process. Type IIa

PROPORTIONS



Sample Image Used

CLARITY CHARACTERISTICS



KEY TO SYMBOLS

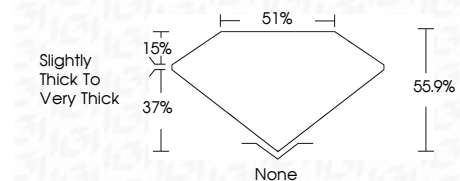
Red symbols indicate internal characteristics. Green symbols indicate external characteristics.

COLOR

D E F G H I J Faint Very Light Light

CLARITY

FL IF VVS 1-2 VS 1-2 SI 1-2 I 1-3 Flawless Internally Flawless Very Very Slightly Included Very Slightly Included Slightly Included Included



ADDITIONAL GRADING INFORMATION

Polish EXCELLENT Symmetry EXCELLENT Fluorescence NONE Inscription(s) LG806628576 Comments: This Laboratory Grown Diamond was created by Chemical Vapor Deposition (CVD) growth process. Type IIa



June 2, 2026 IGI Report No. LG806628576 TRIANGULAR MODIFIED BRILLIANT 1.55 CARAT D VVS 2 7.94 X 8.59 X 4.80 MM EXCELLENT EXCELLENT NONE EXCELLENT EXCELLENT NONE LG806628576 Comments: This Laboratory Grown Diamond was created by Chemical Vapor Deposition (CVD) growth process. Type IIa