



**ELECTRONIC COPY**

LG806627937  
Report verification at igi.org



June 8, 2026

IGI Report Number **LG806627937**

Description **LABORATORY GROWN DIAMOND**

Shape and Cutting Style **PRINCESS CUT**

Measurements **7.01 X 6.85 X 4.81 MM**

**GRADING RESULTS**

Carat Weight **2.04 CARATS**

Color Grade **F**

Clarity Grade **VS 1**

June 8, 2026  
IGI Report Number **LG806627937**  
Description **LABORATORY GROWN DIAMOND**  
Shape and Cutting Style **PRINCESS CUT**  
Measurements **7.01 X 6.85 X 4.81 MM**

**GRADING RESULTS**

Carat Weight **2.04 CARATS**

Color Grade **F**

Clarity Grade **VS 1**

**ADDITIONAL GRADING INFORMATION**

Polish **EXCELLENT**

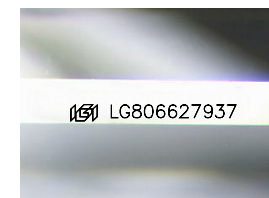
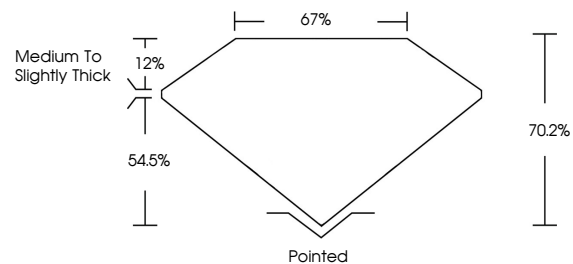
Symmetry **EXCELLENT**

Fluorescence **NONE**

Inscription(s) **IGI LG806627937**

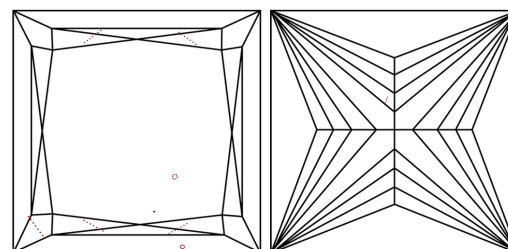
Comments: This Laboratory Grown Diamond was created by Chemical Vapor Deposition (CVD) growth process.  
Type IIa

**PROPORTIONS**



Sample Image Used

**CLARITY CHARACTERISTICS**



**KEY TO SYMBOLS**

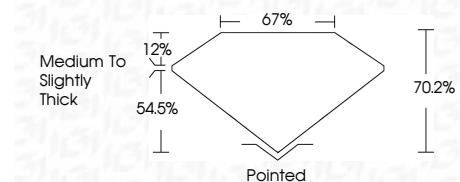
Red symbols indicate internal characteristics.  
Green symbols indicate external characteristics.

**COLOR**

D E F G H I J Faint Very Light Light

**CLARITY**

FL	IF	VS <sup>1-2</sup>	VS <sup>1-2</sup>	SI <sup>1-2</sup>	I <sup>1-3</sup>
Flawless	Internally Flawless	Very Very Slightly Included	Very Slightly Included	Slightly Included	Included



**ADDITIONAL GRADING INFORMATION**

Polish **EXCELLENT**

Symmetry **EXCELLENT**

Fluorescence **NONE**

Inscription(s) **IGI LG806627937**

Comments: This Laboratory Grown Diamond was created by Chemical Vapor Deposition (CVD) growth process.  
Type IIa



**IGI**



June 8, 2026  
IGI Report No. **LG806627937**  
**PRINCESS CUT**  
**2.04 CARATS**  
F  
Color Grade  
VS 1  
Clarity Grade  
70.2%  
67%  
Depth  
Table  
Girdle  
Medium to Slightly Thick  
Pointed  
Culet  
Polish  
EXCELLENT  
Symmetry  
EXCELLENT  
Fluorescence  
NONE  
Inscription(s)  
IGI LG806627937  
Comments: This Laboratory Grown Diamond was created by Chemical Vapor Deposition (CVD) growth process.  
Type IIa