



June 1, 2026

IGI Report Number **LG806624437**

**ROUND BRILLIANT
LABORATORY GROWN DIAMOND**
5.14 - 5.16 X 3.22 MM

Carat Weight	0.53 CARAT
Color Grade	D
Clarity Grade	VVS 2
Cut Grade	IDEAL
Polish	VERY GOOD
Symmetry	VERY GOOD
Fluorescence	NONE
Inscription(s)	IGI LG806624437

Comments: As Grown - No indication of post-growth treatment. This Laboratory Grown Diamond was created by High Pressure High Temperature (HPHT) growth process. Type II

LABORATORY GROWN DIAMOND REPORT

June 1, 2026
IGI Report Number **LG806624437**
Description **LABORATORY GROWN DIAMOND**
Shape and Cutting Style **ROUND BRILLIANT**
Measurements **5.14 - 5.16 X 3.22 MM**

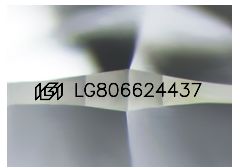
GRADING RESULTS

Carat Weight **0.53 CARAT**
Color Grade **D**
Clarity Grade **VVS 2**
Cut Grade **IDEAL**

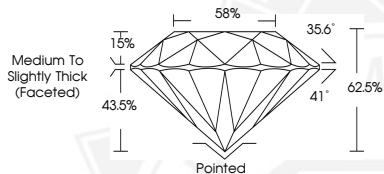
ADDITIONAL GRADING INFORMATION

Polish **VERY GOOD**
Symmetry **VERY GOOD**
Fluorescence **NONE**
Inscription(s) **IGI LG806624437**

Comments: As Grown - No indication of post-growth treatment. This Laboratory Grown Diamond was created by High Pressure High Temperature (HPHT) growth process. Type II



Sample Image Used



June 1, 2026

IGI Report Number **LG806624437**

**ROUND BRILLIANT
LABORATORY GROWN DIAMOND**
5.14 - 5.16 X 3.22 MM

Carat Weight	0.53 CARAT
Color Grade	D
Clarity Grade	VVS 2
Cut Grade	IDEAL
Polish	VERY GOOD
Symmetry	VERY GOOD
Fluorescence	NONE
Inscription(s)	IGI LG806624437

Comments: As Grown - No indication of post-growth treatment. This Laboratory Grown Diamond was created by High Pressure High Temperature (HPHT) growth process. Type II



THIS DOCUMENT WAS PRODUCED WITH THE FOLLOWING SECURITY MEASURES: SPECIAL DOCUMENT PAPER, INK SCREENS, WATERMARK, BACKGROUND DESIGNS, HOLOGRAM AND OTHER SECURITY FEATURES NOT LISTED AND DO EXCEED DOCUMENT SECURITY INDUSTRY GUIDELINES.