



ELECTRONIC COPY

LG806621356
Report verification at igi.org



June 9, 2026

IGI Report Number **LG806621356**

Description **LABORATORY GROWN DIAMOND**

Shape and Cutting Style **CUSHION BRILLIANT**

Measurements **9.60 X 8.89 X 5.74 MM**

GRADING RESULTS

Carat Weight **3.54 CARATS**

Color Grade **E**

Clarity Grade **VVS 2**

June 9, 2026

IGI Report Number **LG806621356**

Description **LABORATORY GROWN DIAMOND**

Shape and Cutting Style **CUSHION BRILLIANT**

Measurements **9.60 X 8.89 X 5.74 MM**

GRADING RESULTS

Carat Weight **3.54 CARATS**

Color Grade **E**

Clarity Grade **VVS 2**

ADDITIONAL GRADING INFORMATION

Polish **EXCELLENT**

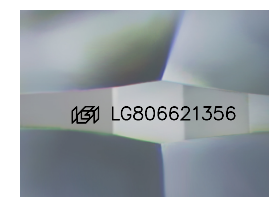
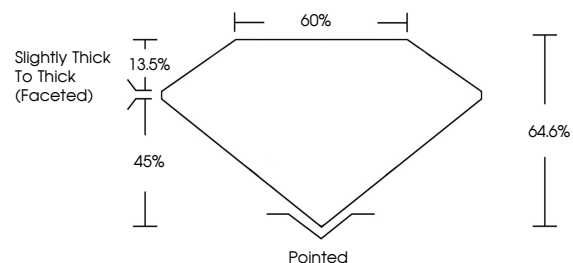
Symmetry **EXCELLENT**

Fluorescence **NONE**

Inscription(s) **IGI LG806621356**

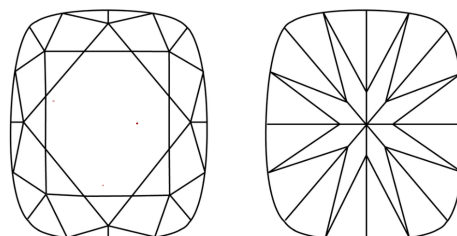
Comments: This Laboratory Grown Diamond was created by Chemical Vapor Deposition (CVD) growth process. Type IIa

PROPORTIONS



Sample Image Used

CLARITY CHARACTERISTICS



KEY TO SYMBOLS

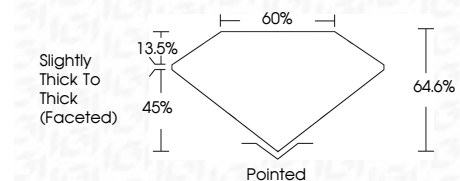
Red symbols indicate internal characteristics.
Green symbols indicate external characteristics.

COLOR

D E F G H I J Faint Very Light Light

CLARITY

FL	IF	VVS ¹⁻²	VS ¹⁻²	SI ¹⁻²	I ¹⁻³
Flawless	Internally Flawless	Very Very Slightly Included	Very Slightly Included	Slightly Included	Included



ADDITIONAL GRADING INFORMATION

Polish **EXCELLENT**

Symmetry **EXCELLENT**

Fluorescence **NONE**

Inscription(s) **IGI LG806621356**

Comments: This Laboratory Grown Diamond was created by Chemical Vapor Deposition (CVD) growth process. Type IIa



June 9, 2026	IGI Report No LG806621356	3.54 CARATS	E
CUSHION BRILLIANT	9.60 X 8.89 X 5.74 MM	VVS 2	64.6%
Carat Weight	Color Grade	Clarity Grade	Table
3.54 CARATS	E	VVS 2	64.6%
Depth	Girdle	Slightly Thick To Thick (Faceted)	Pointed
5.74 MM	None	None	EXCELLENT
Culet	Polish	Symmetry	Fluorescence
None	EXCELLENT	EXCELLENT	NONE
Inscription(s)	IGI LG806621356		

Comments: This Laboratory Grown Diamond was created by Chemical Vapor Deposition (CVD) growth process. Type IIa