



ELECTRONIC COPY

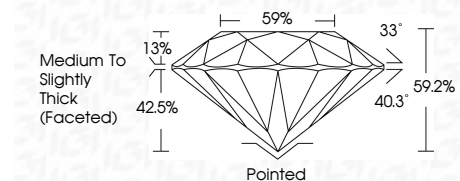
LG806621119
Report verification at igi.org



June 10, 2026
IGI Report Number LG806621119
Description LABORATORY GROWN DIAMOND
Shape and Cutting Style ROUND BRILLIANT
Measurements 8.28 - 8.34 X 4.92 MM

GRADING RESULTS

Carat Weight 2.08 CARATS
Color Grade E
Clarity Grade VVS 2
Cut Grade IDEAL



ADDITIONAL GRADING INFORMATION

Polish EXCELLENT
Symmetry EXCELLENT
Fluorescence NONE
Inscription(s) IGI LG806621119
Comments: This Laboratory Grown Diamond was created by Chemical Vapor Deposition (CVD) growth process. Type IIa



June 10, 2026
IGI Report No. LG806621119
ROUND BRILLIANT
8.28 - 8.34 X 4.92 MM
2.08 CARATS
E
VVS 2
IDEAL
59.2%
Medium To Slightly Thick (Faceted)
Pointed
EXCELLENT
EXCELLENT
NONE
IGI LG806621119
Comments: This Laboratory Grown Diamond was created by Chemical Vapor Deposition (CVD) growth process. Type IIa

June 10, 2026
IGI Report Number LG806621119
Description LABORATORY GROWN DIAMOND
Shape and Cutting Style ROUND BRILLIANT
Measurements 8.28 - 8.34 X 4.92 MM

GRADING RESULTS

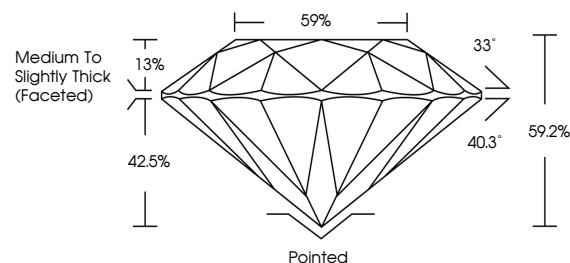
Carat Weight 2.08 CARATS
Color Grade E
Clarity Grade VVS 2
Cut Grade IDEAL

ADDITIONAL GRADING INFORMATION

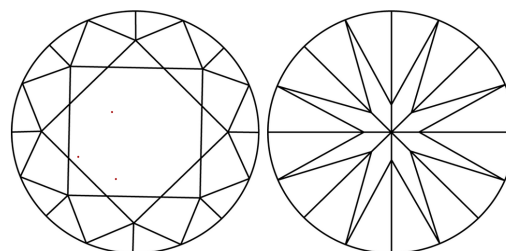
Polish EXCELLENT
Symmetry EXCELLENT
Fluorescence NONE
Inscription(s) IGI LG806621119

Comments: This Laboratory Grown Diamond was created by Chemical Vapor Deposition (CVD) growth process. Type IIa

PROPORTIONS

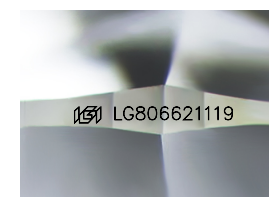


CLARITY CHARACTERISTICS



KEY TO SYMBOLS

Red symbols indicate internal characteristics.
Green symbols indicate external characteristics.



Sample Image Used

COLOR

D E F G H I J Faint Very Light Light

CLARITY

FL IF VVS 1-2 VS 1-2 SI 1-2 I 1-3
Flawless Internally Flawless Very Very Slightly Included Very Slightly Included Slightly Included Included

