



**ELECTRONIC COPY**

LG806620298  
Report verification at igi.org



June 16, 2026  
IGI Report Number **LG806620298**  
Description **LABORATORY GROWN DIAMOND**  
Shape and Cutting Style **MODIFIED NONAGON STEP CUT**  
Measurements **9.16 X 5.41 X 3.08 MM**  
**GRADING RESULTS**  
Carat Weight **1.10 CARAT**  
Color Grade **E**  
Clarity Grade **VS 1**

**LABORATORY GROWN DIAMOND REPORT**

June 16, 2026  
IGI Report Number **LG806620298**  
Description **LABORATORY GROWN DIAMOND**  
Shape and Cutting Style **MODIFIED NONAGON STEP CUT**  
Measurements **9.16 X 5.41 X 3.08 MM**

**GRADING RESULTS**

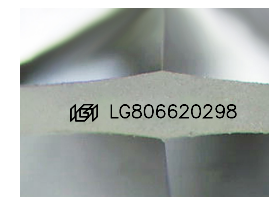
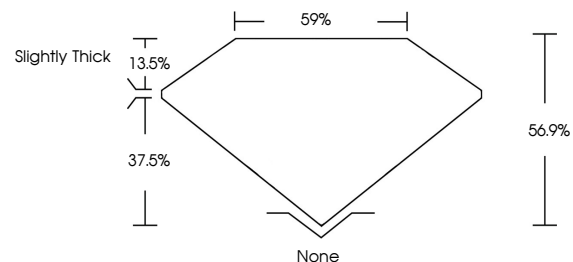
Carat Weight **1.10 CARAT**  
Color Grade **E**  
Clarity Grade **VS 1**

**ADDITIONAL GRADING INFORMATION**

Polish **EXCELLENT**  
Symmetry **EXCELLENT**  
Fluorescence **NONE**  
Inscription(s) **IGI LG806620298**

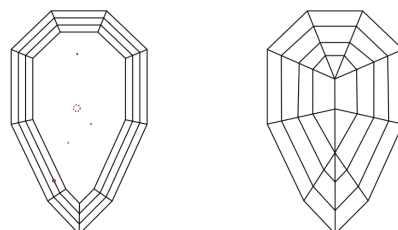
Comments: This Laboratory Grown Diamond was created by Chemical Vapor Deposition (CVD) growth process.  
Type IIa

**PROPORTIONS**



Sample Image Used

**CLARITY CHARACTERISTICS**



**KEY TO SYMBOLS**

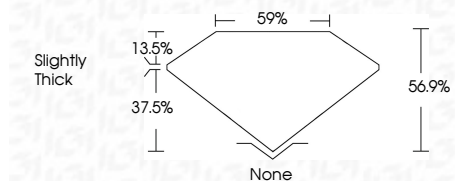
Red symbols indicate internal characteristics.  
Green symbols indicate external characteristics.

**COLOR**

D E F G H I J Faint Very Light Light

**CLARITY**

FL	IF	VS <sup>1-2</sup>	VS <sup>1-2</sup>	SI <sup>1-2</sup>	I <sup>1-3</sup>
Flawless	Internally Flawless	Very Very Slightly Included	Very Slightly Included	Slightly Included	Included



**ADDITIONAL GRADING INFORMATION**

Polish **EXCELLENT**  
Symmetry **EXCELLENT**  
Fluorescence **NONE**  
Inscription(s) **IGI LG806620298**  
Comments: This Laboratory Grown Diamond was created by Chemical Vapor Deposition (CVD) growth process.  
Type IIa



June 16, 2026  
IGI Report No **LG806620298**  
**MODIFIED NONAGON STEP CUT**  
9.16 X 5.41 X 3.08 MM  
1.10 CARAT  
E  
VS 1  
56.9%  
37.5%  
Slightly Thick  
None  
EXCELLENT  
EXCELLENT  
NONE  
IGI LG806620298  
Comments: This Laboratory Grown Diamond was created by Chemical Vapor Deposition (CVD) growth process.  
Type IIa