



**ELECTRONIC COPY**

LG806619862  
Report verification at igi.org



June 9, 2026

IGI Report Number **LG806619862**

Description **LABORATORY GROWN DIAMOND**

Shape and Cutting Style **PEAR MIXED CUT**

Measurements **11.58 X 5.92 X 3.72 MM**

**GRADING RESULTS**

Carat Weight **1.52 CARAT**

Color Grade **E**

Clarity Grade **VVS 2**

June 9, 2026

IGI Report Number **LG806619862**

Description **LABORATORY GROWN DIAMOND**

Shape and Cutting Style **PEAR MIXED CUT**

Measurements **11.58 X 5.92 X 3.72 MM**

**GRADING RESULTS**

Carat Weight **1.52 CARAT**

Color Grade **E**

Clarity Grade **VVS 2**

**ADDITIONAL GRADING INFORMATION**

Polish **EXCELLENT**

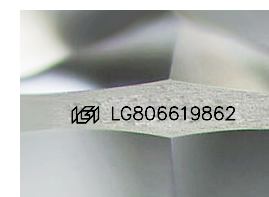
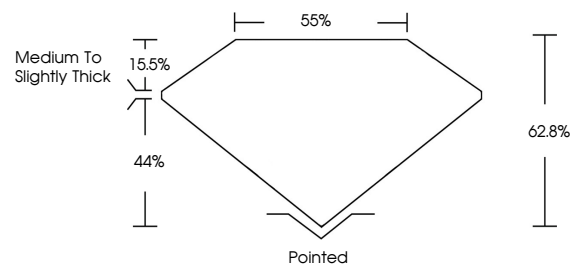
Symmetry **EXCELLENT**

Fluorescence **NONE**

Inscription(s) **IGI LG806619862**

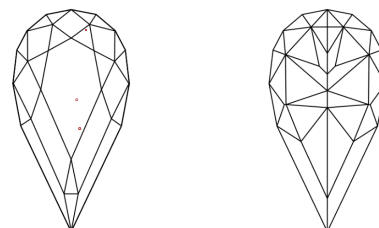
Comments: This Laboratory Grown Diamond was created by Chemical Vapor Deposition (CVD) growth process.  
Type IIa

**PROPORTIONS**



Sample Image Used

**CLARITY CHARACTERISTICS**



**KEY TO SYMBOLS**

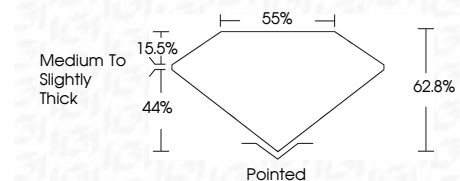
Red symbols indicate internal characteristics.  
Green symbols indicate external characteristics.

**COLOR**

D E F G H I J Faint Very Light Light

**CLARITY**

FL	IF	VVS <sup>1-2</sup>	VS <sup>1-2</sup>	SI <sup>1-2</sup>	I <sup>1-3</sup>
Flawless	Internally Flawless	Very Very Slightly Included	Very Slightly Included	Slightly Included	Included



**ADDITIONAL GRADING INFORMATION**

Polish **EXCELLENT**

Symmetry **EXCELLENT**

Fluorescence **NONE**

Inscription(s) **IGI LG806619862**

Comments: This Laboratory Grown Diamond was created by Chemical Vapor Deposition (CVD) growth process.  
Type IIa



June 9, 2026  
IGI Report No. LG806619862  
PEAR MIXED CUT

11.58 X 5.92 X 3.72 MM

1.52 CARAT  
E

VVS 2

62.8%  
44%  
15.5%

Medium to Slightly Thick

Pointed

EXCELLENT

EXCELLENT

NONE

IGI LG806619862

Comments: This Laboratory Grown Diamond was created by Chemical Vapor Deposition (CVD) growth process.  
Type IIa