



**ELECTRONIC COPY**

LG806619505  
Report verification at igi.org



June 8, 2026

IGI Report Number **LG806619505**

Description **LABORATORY GROWN DIAMOND**

Shape and Cutting Style **OVAL MODIFIED BRILLIANT**

Measurements **9.26 X 6.44 X 3.52 MM**

**GRADING RESULTS**

Carat Weight **1.56 CARAT**

Color Grade **FANCY VIVID PINK**

Clarity Grade **VS 1**

June 8, 2026

IGI Report Number **LG806619505**

Description **LABORATORY GROWN DIAMOND**

Shape and Cutting Style **OVAL MODIFIED BRILLIANT**

Measurements **9.26 X 6.44 X 3.52 MM**

**GRADING RESULTS**

Carat Weight **1.56 CARAT**

Color Grade **FANCY VIVID PINK**

Clarity Grade **VS 1**

**ADDITIONAL GRADING INFORMATION**

Polish **VERY GOOD**

Symmetry **EXCELLENT**

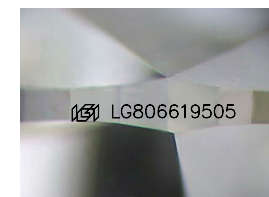
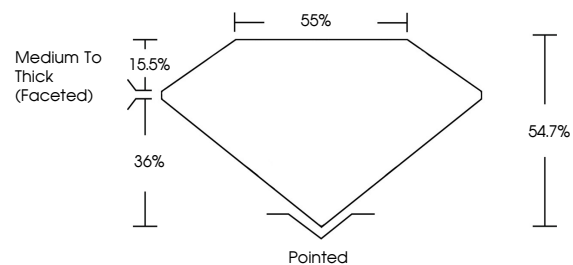
Fluorescence **SLIGHT**

Inscription(s) **LG806619505**

Comments: This Laboratory Grown Diamond was created by Chemical Vapor Deposition (CVD) growth process.

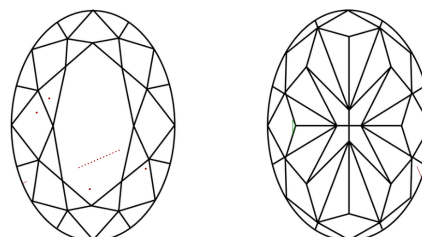
Indications of post-growth treatment.

**PROPORTIONS**



Sample Image Used

**CLARITY CHARACTERISTICS**



**KEY TO SYMBOLS**

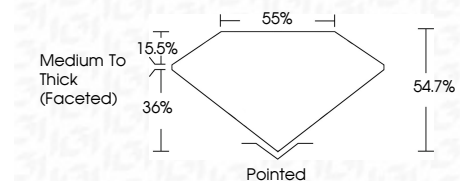
Red symbols indicate internal characteristics.  
Green symbols indicate external characteristics.

**COLOR**

D E F G H I J Faint Very Light Light

**CLARITY**

FL	IF	VS <sup>1-2</sup>	VS <sup>1-2</sup>	SI <sup>1-2</sup>	I <sup>1-3</sup>
Flawless	Internally Flawless	Very Very Slightly Included	Very Slightly Included	Slightly Included	Included



**ADDITIONAL GRADING INFORMATION**

Polish **VERY GOOD**

Symmetry **EXCELLENT**

Fluorescence **SLIGHT**

Inscription(s) **LG806619505**

Comments: This Laboratory Grown Diamond was created by Chemical Vapor Deposition (CVD) growth process. Indications of post-growth treatment.



June 8, 2026	IGI Report No. LG806619505	1.56 CARAT	VS 1	Polished
IGI Report No. LG806619505	OVAL MODIFIED BRILLIANT	FANCY VIVID PINK	54.7%	VERY GOOD
9.26 X 6.44 X 3.52 MM	Color Grade	Medium To Thick (Faceted)	36%	EXCELLENT
1.56 CARAT	Clarity Grade	Pointed		SLIGHT
FANCY VIVID PINK	Table			Inscription(s)
VS 1	Girdle			LG806619505
54.7%	Culet			
36%	Polish			
Medium To Thick (Faceted)	Symmetry			
Pointed	Fluorescence			
VERY GOOD	Inscription(s)			
EXCELLENT				
SLIGHT				
LG806619505				

Comments: This Laboratory Grown Diamond was created by Chemical Vapor Deposition (CVD) growth process. Indications of post-growth treatment.