



**ELECTRONIC COPY**

LG806619474  
Report verification at igi.org



June 8, 2026  
IGI Report Number **LG806619474**  
Description **LABORATORY GROWN DIAMOND**  
Shape and Cutting Style **MODIFIED HEXAGONAL MIXED CUT**  
Measurements **8.69 X 7.52 X 4.47 MM**  
**GRADING RESULTS**  
Carat Weight **2.11 CARATS**  
Color Grade **E**  
Clarity Grade **VS 1**

**LABORATORY GROWN DIAMOND REPORT**

June 8, 2026  
IGI Report Number **LG806619474**  
Description **LABORATORY GROWN DIAMOND**  
Shape and Cutting Style **MODIFIED HEXAGONAL MIXED CUT**  
Measurements **8.69 X 7.52 X 4.47 MM**

**GRADING RESULTS**

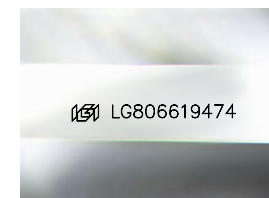
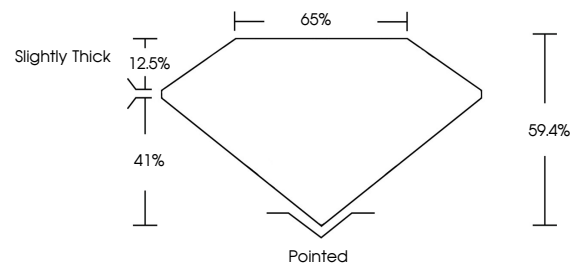
Carat Weight **2.11 CARATS**  
Color Grade **E**  
Clarity Grade **VS 1**

**ADDITIONAL GRADING INFORMATION**

Polish **EXCELLENT**  
Symmetry **EXCELLENT**  
Fluorescence **NONE**  
Inscription(s) **IGI LG806619474**

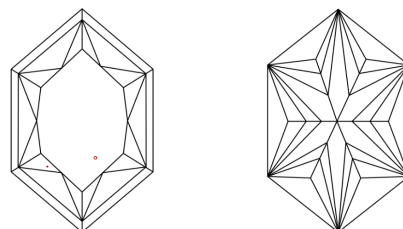
Comments: This Laboratory Grown Diamond was created by Chemical Vapor Deposition (CVD) growth process.  
Type IIa

**PROPORTIONS**



Sample Image Used

**CLARITY CHARACTERISTICS**



**KEY TO SYMBOLS**

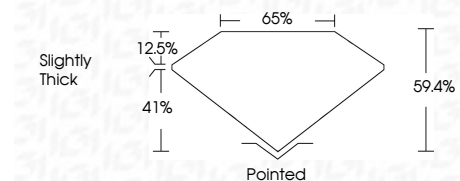
Red symbols indicate internal characteristics.  
Green symbols indicate external characteristics.

**COLOR**

D E F G H I J Faint Very Light Light

**CLARITY**

FL	IF	VS <sup>1-2</sup>	VS <sup>1-2</sup>	SI <sup>1-2</sup>	I <sup>1-3</sup>
Flawless	Internally Flawless	Very Very Slightly Included	Very Slightly Included	Slightly Included	Included



**ADDITIONAL GRADING INFORMATION**

Polish **EXCELLENT**  
Symmetry **EXCELLENT**  
Fluorescence **NONE**  
Inscription(s) **IGI LG806619474**  
Comments: This Laboratory Grown Diamond was created by Chemical Vapor Deposition (CVD) growth process.  
Type IIa



June 8, 2026  
IGI Report No LG806619474  
**MODIFIED HEXAGONAL MIXED CUT**  
8.69 X 7.52 X 4.47 MM  
2.11 CARATS  
E  
VS 1  
E  
59.4%  
65%  
Slightly Thick  
Pointed  
EXCELLENT  
EXCELLENT  
NONE  
IGI LG806619474  
Comments: This Laboratory Grown Diamond was created by Chemical Vapor Deposition (CVD) growth process.  
Type IIa