



**ELECTRONIC COPY**

LG806619467  
Report verification at igi.org



June 9, 2026

IGI Report Number **LG806619467**

Description **LABORATORY GROWN DIAMOND**

Shape and Cutting Style **EMERALD CUT**

Measurements **7.44 X 5.15 X 3.15 MM**

**GRADING RESULTS**

Carat Weight **1.31 CARAT**

Color Grade **FANCY VIVID PINK**

Clarity Grade **VS 1**

June 9, 2026  
IGI Report Number **LG806619467**  
Description **LABORATORY GROWN DIAMOND**  
Shape and Cutting Style **EMERALD CUT**  
Measurements **7.44 X 5.15 X 3.15 MM**

**GRADING RESULTS**

Carat Weight **1.31 CARAT**

Color Grade **FANCY VIVID PINK**

Clarity Grade **VS 1**

**ADDITIONAL GRADING INFORMATION**

Polish **VERY GOOD**

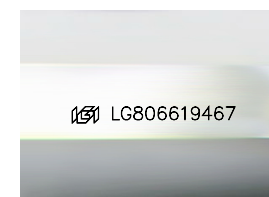
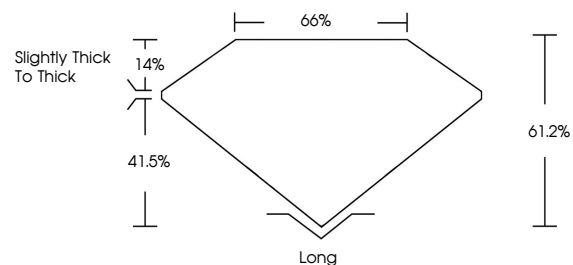
Symmetry **VERY GOOD**

Fluorescence **SLIGHT**

Inscription(s) **IGI LG806619467**

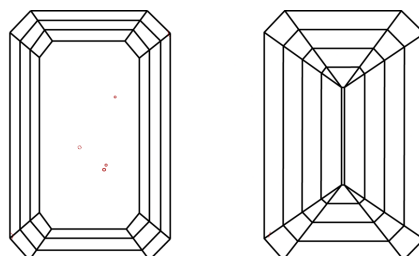
Comments: This Laboratory Grown Diamond was created by Chemical Vapor Deposition (CVD) growth process.  
Indications of post-growth treatment.

**PROPORTIONS**



Sample Image Used

**CLARITY CHARACTERISTICS**



**KEY TO SYMBOLS**

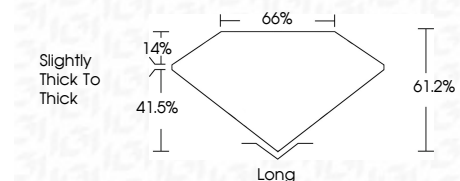
Red symbols indicate internal characteristics.  
Green symbols indicate external characteristics.

**COLOR**

D E F G H I J Faint Very Light Light

**CLARITY**

FL	IF	VS <sup>1-2</sup>	VS <sup>1-2</sup>	SI <sup>1-2</sup>	I <sup>1-3</sup>
Flawless	Internally Flawless	Very Very Slightly Included	Very Slightly Included	Slightly Included	Included



**ADDITIONAL GRADING INFORMATION**

Polish **VERY GOOD**

Symmetry **VERY GOOD**

Fluorescence **SLIGHT**

Inscription(s) **IGI LG806619467**

Comments: This Laboratory Grown Diamond was created by Chemical Vapor Deposition (CVD) growth process.  
Indications of post-growth treatment.



**IGI**



June 9, 2026  
IGI Report No. **LG806619467**  
**EMERALD CUT**

**7.44 X 5.15 X 3.15 MM**

1.31 CARAT  
FANCY VIVID PINK

VS 1  
61.2%  
66%

Slightly thick to thick

Long  
VERY GOOD  
VERY GOOD  
SLIGHT

IGI LG806619467

Comments: This Laboratory Grown Diamond was created by Chemical Vapor Deposition (CVD) growth process.  
Indications of post-growth treatment.