



ELECTRONIC COPY

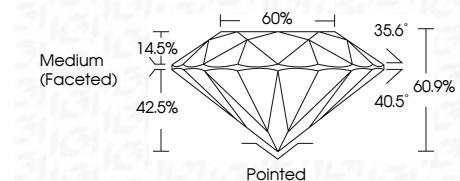
LG806618098 Report verification at igi.org



June 10, 2026 IGI Report Number LG806618098 Description LABORATORY GROWN DIAMOND Shape and Cutting Style ROUND BRILLIANT Measurements 6.45 - 6.50 X 3.94 MM

GRADING RESULTS

Carat Weight 1.03 CARAT Color Grade E Clarity Grade VVS 1 Cut Grade IDEAL



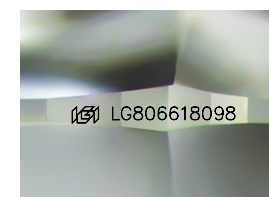
ADDITIONAL GRADING INFORMATION

Polish EXCELLENT Symmetry EXCELLENT Fluorescence NONE Inscription(s) LG806618098 Comments: HEARTS & ARROWS As Grown - No indication of post-growth treatment. This Laboratory Grown Diamond was created by High Pressure High Temperature (HPHT) growth process. Type II



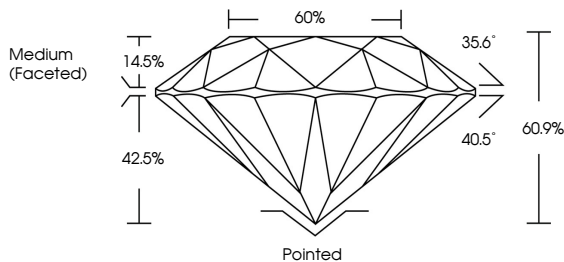
June 10, 2026 IGI Report No LG806618098 ROUND BRILLIANT 6.45 - 6.50 X 3.94 MM 1.03 CARAT E VVS 1 IDEAL 60.9% 60% Medium (Faceted) Pointed EXCELLENT EXCELLENT NONE NONE LG806618098

Comments: HEARTS & ARROWS As Grown - No indication of post-growth treatment. This Laboratory Grown Diamond was created by High Pressure High Temperature (HPHT) growth process. Type II

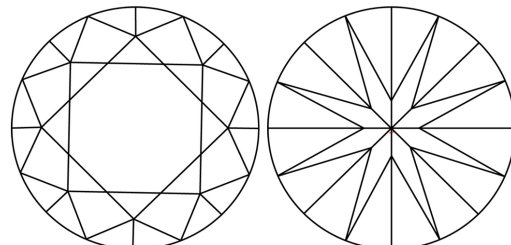


Sample Image Used

PROPORTIONS

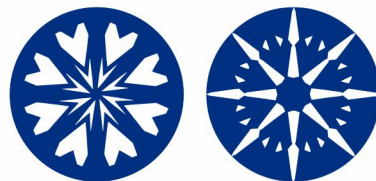


CLARITY CHARACTERISTICS



KEY TO SYMBOLS

Red symbols indicate internal characteristics. Green symbols indicate external characteristics.



COLOR

Table with color grades: D, E, F, G, H, I, J, Faint, Very Light, Light

CLARITY

Table with clarity grades: FL, IF, VVS 1-2, VS 1-2, SI 1-2, I 1-3, Flawless, Internally Flawless, Very Very Slightly Included, Very Slightly Included, Slightly Included, Included



June 10, 2026 IGI Report Number LG806618098 Description LABORATORY GROWN DIAMOND Shape and Cutting Style ROUND BRILLIANT Measurements 6.45 - 6.50 X 3.94 MM

GRADING RESULTS

Carat Weight 1.03 CARAT Color Grade E Clarity Grade VVS 1 Cut Grade IDEAL

ADDITIONAL GRADING INFORMATION

Polish EXCELLENT Symmetry EXCELLENT Fluorescence NONE Inscription(s) LG806618098

Comments: HEARTS & ARROWS As Grown - No indication of post-growth treatment. This Laboratory Grown Diamond was created by High Pressure High Temperature (HPHT) growth process. Type II