



ELECTRONIC COPY

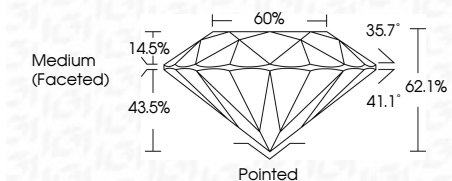
LG806618096 Report verification at igi.org



June 10, 2026 IGI Report Number LG806618096 Description LABORATORY GROWN DIAMOND Shape and Cutting Style ROUND BRILLIANT Measurements 6.42 - 6.47 X 4.00 MM

GRADING RESULTS

Carat Weight 1.03 CARAT Color Grade D Clarity Grade VVS 1 Cut Grade IDEAL



ADDITIONAL GRADING INFORMATION

Polish EXCELLENT Symmetry EXCELLENT Fluorescence NONE Inscription(s) LG806618096 Comments: HEARTS & ARROWS As Grown - No indication of post-growth treatment. This Laboratory Grown Diamond was created by High Pressure High Temperature (HPHT) growth process. Type II



IGI

June 10, 2026 IGI Report No LG806618096 ROUND BRILLIANT 6.42 - 6.47 X 4.00 MM 1.03 CARAT D VVS 1 IDEAL 62.1% 60% Medium (Faceted) Pointed EXCELLENT EXCELLENT NONE NONE LG806618096

Comments: HEARTS & ARROWS As Grown - No indication of post-growth treatment. This Laboratory Grown Diamond was created by High Pressure High Temperature (HPHT) growth process. Type II

June 10, 2026 IGI Report Number LG806618096 Description LABORATORY GROWN DIAMOND Shape and Cutting Style ROUND BRILLIANT Measurements 6.42 - 6.47 X 4.00 MM

GRADING RESULTS

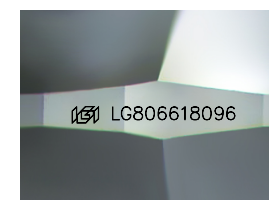
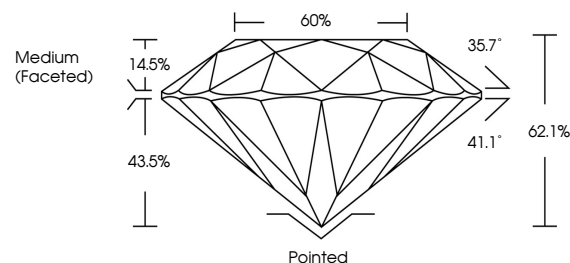
Carat Weight 1.03 CARAT Color Grade D Clarity Grade VVS 1 Cut Grade IDEAL

ADDITIONAL GRADING INFORMATION

Polish EXCELLENT Symmetry EXCELLENT Fluorescence NONE Inscription(s) LG806618096

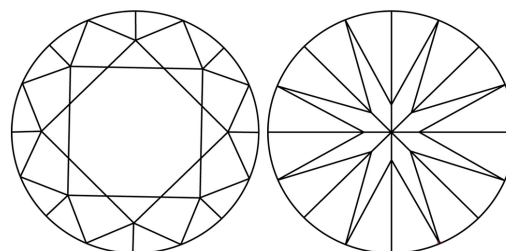
Comments: HEARTS & ARROWS As Grown - No indication of post-growth treatment. This Laboratory Grown Diamond was created by High Pressure High Temperature (HPHT) growth process. Type II

PROPORTIONS



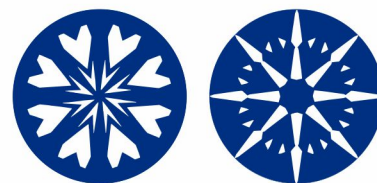
Sample Image Used

CLARITY CHARACTERISTICS



KEY TO SYMBOLS

Red symbols indicate internal characteristics. Green symbols indicate external characteristics.



COLOR

D E F G H I J Faint Very Light Light

CLARITY

FL IF VVS 1-2 VS 1-2 SI 1-2 I 1-3 Flawless Internally Flawless Very Very Slightly Included Very Slightly Included Slightly Included Included

