



**ELECTRONIC COPY**

LG806618031  
Report verification at igi.org



June 10, 2026  
IGI Report Number **LG806618031**  
Description **LABORATORY GROWN DIAMOND**  
Shape and Cutting Style **CUSHION MODIFIED BRILLIANT**  
Measurements **9.36 X 7.53 X 5.28 MM**  
**GRADING RESULTS**  
Carat Weight **3.36 CARATS**  
Color Grade **VERY LIGHT BROWN**  
Clarity Grade **VS 1**

**LABORATORY GROWN DIAMOND REPORT**

June 10, 2026  
IGI Report Number **LG806618031**  
Description **LABORATORY GROWN DIAMOND**  
Shape and Cutting Style **CUSHION MODIFIED BRILLIANT**  
Measurements **9.36 X 7.53 X 5.28 MM**

**GRADING RESULTS**

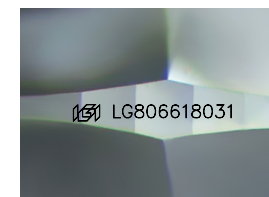
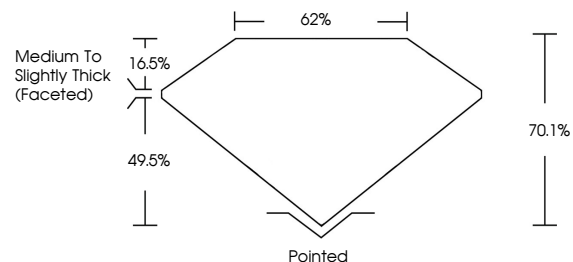
Carat Weight **3.36 CARATS**  
Color Grade **VERY LIGHT BROWN**  
Clarity Grade **VS 1**

**ADDITIONAL GRADING INFORMATION**

Polish **EXCELLENT**  
Symmetry **EXCELLENT**  
Fluorescence **NONE**  
Inscription(s) **IGI LG806618031**

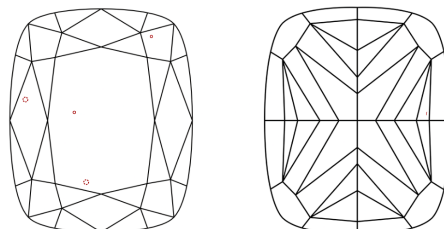
Comments: This Laboratory Grown Diamond was created by Chemical Vapor Deposition (CVD) growth process. Type IIa

**PROPORTIONS**



Sample Image Used

**CLARITY CHARACTERISTICS**



**KEY TO SYMBOLS**

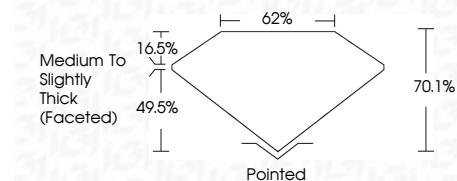
Red symbols indicate internal characteristics.  
Green symbols indicate external characteristics.

**COLOR**

D E F G H I J Faint Very Light Light

**CLARITY**

FL	IF	VS <sup>1-2</sup>	VS <sup>1-2</sup>	SI <sup>1-2</sup>	I <sup>1-3</sup>
Flawless	Internally Flawless	Very Very Slightly Included	Very Slightly Included	Slightly Included	Included



**ADDITIONAL GRADING INFORMATION**

Polish **EXCELLENT**  
Symmetry **EXCELLENT**  
Fluorescence **NONE**  
Inscription(s) **IGI LG806618031**  
Comments: This Laboratory Grown Diamond was created by Chemical Vapor Deposition (CVD) growth process. Type IIa



June 10, 2026  
IGI Report No. LG806618031  
**CUSHION MODIFIED BRILLIANT**  
9.36 X 7.53 X 5.28 MM  
3.36 CARATS  
VERY LIGHT BROWN  
VS 1  
70.1%  
62%  
Medium to Slightly Thick (Faceted)  
Pointed  
EXCELLENT  
EXCELLENT  
NONE  
IGI LG806618031  
Comments: This Laboratory Grown Diamond was created by Chemical Vapor Deposition (CVD) growth process. Type IIa