



ELECTRONIC COPY

LG806618030 Report verification at igi.org



June 10, 2026 IGI Report Number LG806618030 Description LABORATORY GROWN DIAMOND Shape and Cutting Style CUT CORNERED RECTANGULAR MODIFIED BRILLIANT Measurements 13.03 X 9.33 X 6.24 MM GRADING RESULTS Carat Weight 7.09 CARATS Color Grade FANCY VIVID PINK Clarity Grade VVS 2

LABORATORY GROWN DIAMOND REPORT

June 10, 2026 IGI Report Number LG806618030 Description LABORATORY GROWN DIAMOND Shape and Cutting Style CUT CORNERED RECTANGULAR MODIFIED BRILLIANT Measurements 13.03 X 9.33 X 6.24 MM

GRADING RESULTS

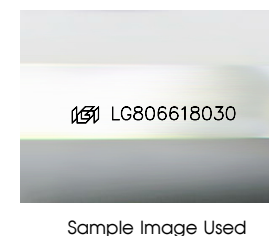
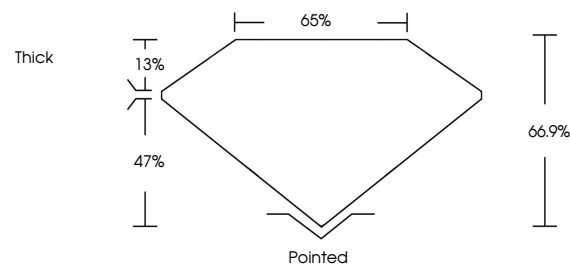
Carat Weight 7.09 CARATS Color Grade FANCY VIVID PINK Clarity Grade VVS 2

ADDITIONAL GRADING INFORMATION

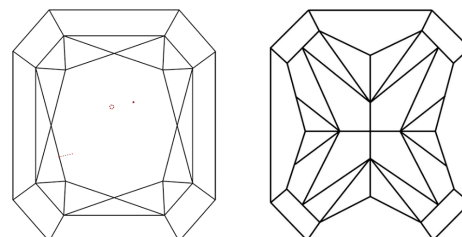
Polish EXCELLENT Symmetry EXCELLENT Fluorescence SLIGHT Inscription(s) LG806618030

Comments: This Laboratory Grown Diamond was created by Chemical Vapor Deposition (CVD) growth process. Indications of post-growth treatment.

PROPORTIONS



CLARITY CHARACTERISTICS



KEY TO SYMBOLS

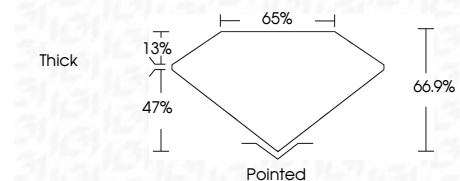
Red symbols indicate internal characteristics. Green symbols indicate external characteristics.

COLOR

D E F G H I J Faint Very Light Light

CLARITY

FL IF VVS 1-2 VS 1-2 SI 1-2 I 1-3 Flawless Internally Flawless Very Very Slightly Included Very Slightly Included Slightly Included Included



ADDITIONAL GRADING INFORMATION

Polish EXCELLENT Symmetry EXCELLENT Fluorescence SLIGHT Inscription(s) LG806618030 Comments: This Laboratory Grown Diamond was created by Chemical Vapor Deposition (CVD) growth process. Indications of post-growth treatment.



Summary of report details including date, report number, description, measurements, grading results, and additional information.

Comments: This Laboratory Grown Diamond was created by Chemical Vapor Deposition (CVD) growth process. Indications of post-growth treatment.