



ELECTRONIC COPY

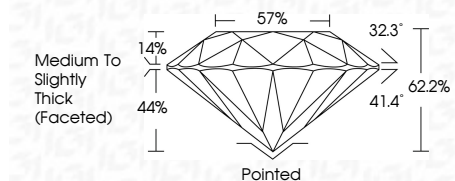
LG806617816 Report verification at igi.org



June 10, 2026 IGI Report Number LG806617816 Description LABORATORY GROWN DIAMOND Shape and Cutting Style ROUND BRILLIANT Measurements 9.16 - 9.22 X 5.72 MM

GRADING RESULTS

Carat Weight 2.96 CARATS Color Grade D Clarity Grade VVS 2 Cut Grade EXCELLENT



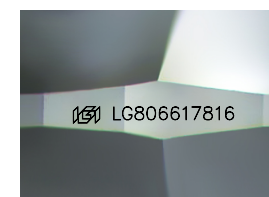
ADDITIONAL GRADING INFORMATION

Polish EXCELLENT Symmetry EXCELLENT Fluorescence NONE Inscription(s) IGI LG806617816 Comments: This Laboratory Grown Diamond was created by Chemical Vapor Deposition (CVD) growth process. Type IIa



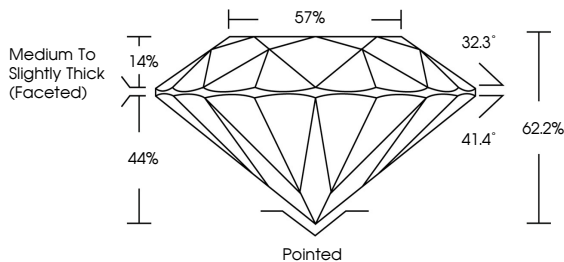
June 10, 2026 IGI Report No LG806617816 ROUND BRILLIANT 2.96 CARATS D VVS 2 EXCELLENT 62.2% 57% Medium To Slightly Thick (Faceted) Pointed EXCELLENT EXCELLENT NONE IGI LG806617816

Comments: This Laboratory Grown Diamond was created by Chemical Vapor Deposition (CVD) growth process. Type IIa

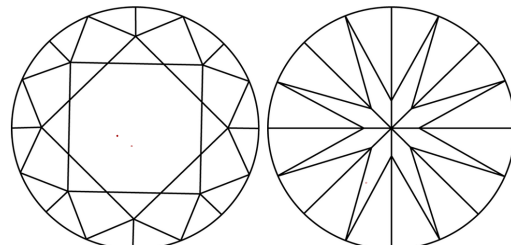


Sample Image Used

PROPORTIONS



CLARITY CHARACTERISTICS



KEY TO SYMBOLS

Red symbols indicate internal characteristics. Green symbols indicate external characteristics.

COLOR

Color scale from D to J, with markers for Faint, Very Light, and Light.

CLARITY

Clarity scale from FL to I, with sub-categories like Internally Flawless, Very Slightly Included, etc.



June 10, 2026 IGI Report Number LG806617816 Description LABORATORY GROWN DIAMOND Shape and Cutting Style ROUND BRILLIANT Measurements 9.16 - 9.22 X 5.72 MM

GRADING RESULTS

Carat Weight 2.96 CARATS Color Grade D Clarity Grade VVS 2 Cut Grade EXCELLENT

ADDITIONAL GRADING INFORMATION

Polish EXCELLENT Symmetry EXCELLENT Fluorescence NONE Inscription(s) IGI LG806617816

Comments: This Laboratory Grown Diamond was created by Chemical Vapor Deposition (CVD) growth process. Type IIa