



ELECTRONIC COPY

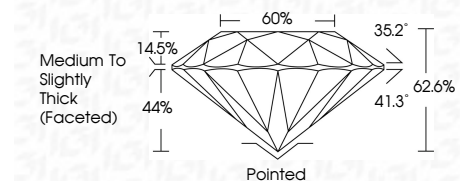
LG806617085
Report verification at igi.org



June 3, 2026
IGI Report Number LG806617085
Description LABORATORY GROWN DIAMOND
Shape and Cutting Style ROUND BRILLIANT
Measurements 7.33 - 7.35 X 4.60 MM

GRADING RESULTS

Carat Weight 1.55 CARAT
Color Grade E
Clarity Grade VVS 1
Cut Grade EXCELLENT

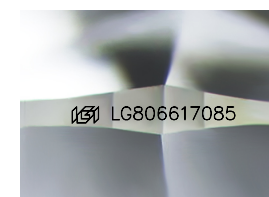


ADDITIONAL GRADING INFORMATION

Polish EXCELLENT
Symmetry EXCELLENT
Fluorescence NONE
Inscription(s) IGI LG806617085
Comments: This Laboratory Grown Diamond was created by Chemical Vapor Deposition (CVD) growth process. Type IIa

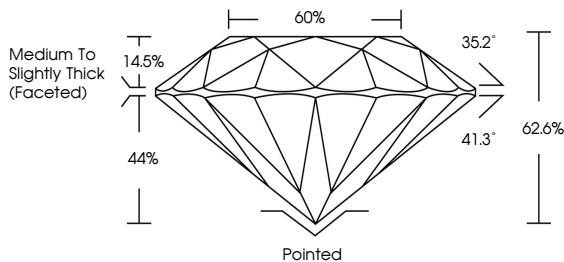


June 3, 2026
IGI Report No. LG806617085
ROUND BRILLIANT
1.55 CARAT E
Color Grade EXCELLENT
Clarity Grade VVS 1
Depth 62.6%
Table 60%
Girdle Medium To Slightly Thick (Faceted)
Culet Pointed
Polish EXCELLENT
Symmetry EXCELLENT
Fluorescence NONE
Inscriptions(s) IGI LG806617085
Comments: This Laboratory Grown Diamond was created by Chemical Vapor Deposition (CVD) growth process. Type IIa

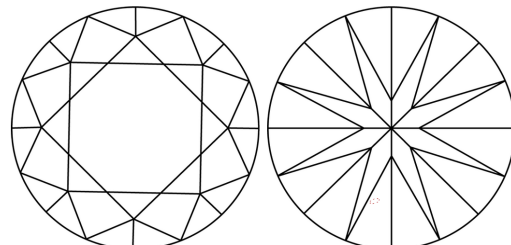


Sample Image Used

PROPORTIONS



CLARITY CHARACTERISTICS



KEY TO SYMBOLS

Red symbols indicate internal characteristics.
Green symbols indicate external characteristics.

COLOR

Table with columns D, E, F, G, H, I, J, Faint, Very Light, Light

CLARITY

Table with columns FL, IF, VVS 1-2, VS 1-2, SI 1-2, I 1-3

Flawless Internally Flawless Very Very Slightly Included Very Slightly Included Slightly Included Included

