



ELECTRONIC COPY

LG806607415
Report verification at igi.org



June 6, 2026
IGI Report Number **LG806607415**
Description **LABORATORY GROWN DIAMOND**
Shape and Cutting Style **SQUARE CUSHION MODIFIED BRILLIANT**
Measurements **5.59 X 5.37 X 3.76 MM**
GRADING RESULTS
Carat Weight **1.00 CARAT**
Color Grade **FANCY YELLOW**
Clarity Grade **VS 1**

LABORATORY GROWN DIAMOND REPORT

June 6, 2026
IGI Report Number **LG806607415**
Description **LABORATORY GROWN DIAMOND**
Shape and Cutting Style **SQUARE CUSHION MODIFIED BRILLIANT**
Measurements **5.59 X 5.37 X 3.76 MM**

GRADING RESULTS

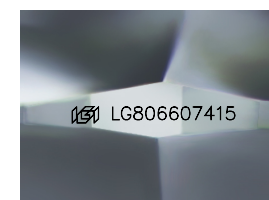
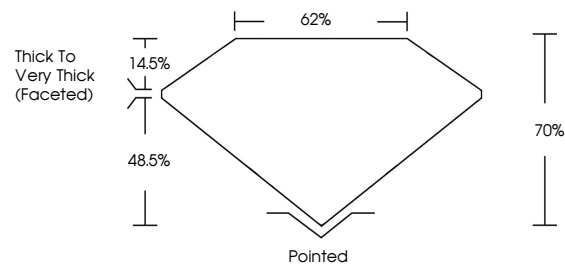
Carat Weight **1.00 CARAT**
Color Grade **FANCY YELLOW**
Clarity Grade **VS 1**

ADDITIONAL GRADING INFORMATION

Polish **EXCELLENT**
Symmetry **EXCELLENT**
Fluorescence **VERY SLIGHT**
Inscription(s) **IGI LG806607415**

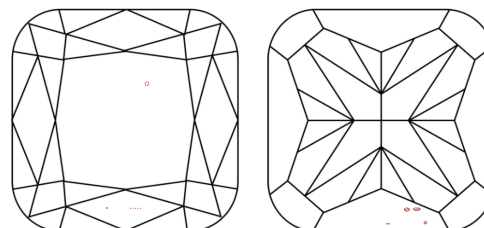
Comments: This Laboratory Grown Diamond was created by Chemical Vapor Deposition (CVD) growth process.
Indications of post-growth treatment.

PROPORTIONS



Sample Image Used

CLARITY CHARACTERISTICS



KEY TO SYMBOLS

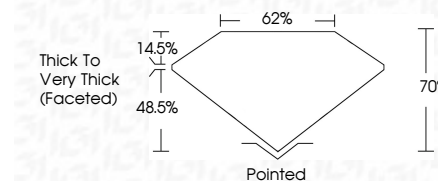
Red symbols indicate internal characteristics.
Green symbols indicate external characteristics.

COLOR

D E F G H I J Faint Very Light Light

CLARITY

FL	IF	VS ¹⁻²	VS ¹⁻²	SI ¹⁻²	I ¹⁻³
Flawless	Internally Flawless	Very Very Slightly Included	Very Slightly Included	Slightly Included	Included



ADDITIONAL GRADING INFORMATION

Polish **EXCELLENT**
Symmetry **EXCELLENT**
Fluorescence **VERY SLIGHT**
Inscription(s) **IGI LG806607415**
Comments: This Laboratory Grown Diamond was created by Chemical Vapor Deposition (CVD) growth process.
Indications of post-growth treatment.



June 6, 2026
IGI Report No. **LG806607415**
SQUARE CUSHION MODIFIED BRILLIANT
1.00 CARAT
FANCY YELLOW
VS 1
5.59 X 5.37 X 3.76 MM
EXCELLENT
EXCELLENT
VERY SLIGHT
IGI LG806607415
Culet Pointed
Polish EXCELLENT
Symmetry EXCELLENT
Fluorescence VERY SLIGHT
Inscription(s) IGI LG806607415
Comments: This Laboratory Grown Diamond was created by Chemical Vapor Deposition (CVD) growth process.
Indications of post-growth treatment.