



ELECTRONIC COPY

LG806604845
Report verification at igi.org



June 3, 2026

IGI Report Number **LG806604845**

Description **LABORATORY GROWN DIAMOND**

Shape and Cutting Style **EMERALD CUT**

Measurements **9.17 X 6.73 X 4.71 MM**

GRADING RESULTS

Carat Weight **2.85 CARATS**

Color Grade **FANCY VIVID PINK**

Clarity Grade **VS 1**

June 3, 2026
IGI Report Number **LG806604845**
Description **LABORATORY GROWN DIAMOND**
Shape and Cutting Style **EMERALD CUT**
Measurements **9.17 X 6.73 X 4.71 MM**

GRADING RESULTS

Carat Weight **2.85 CARATS**

Color Grade **FANCY VIVID PINK**

Clarity Grade **VS 1**

ADDITIONAL GRADING INFORMATION

Polish **VERY GOOD**

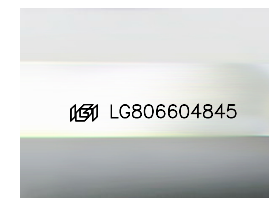
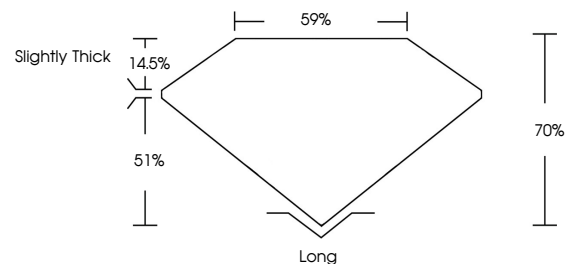
Symmetry **EXCELLENT**

Fluorescence **SLIGHT**

Inscription(s) **LG806604845**

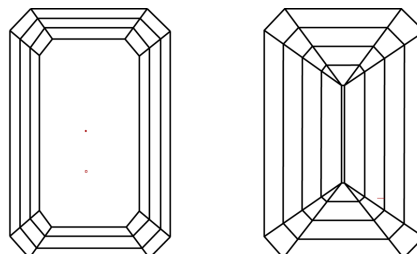
Comments: This Laboratory Grown Diamond was created by Chemical Vapor Deposition (CVD) growth process.
Indications of post-growth treatment.

PROPORTIONS



Sample Image Used

CLARITY CHARACTERISTICS



KEY TO SYMBOLS

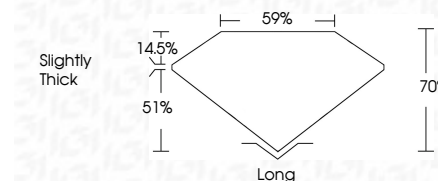
Red symbols indicate internal characteristics.
Green symbols indicate external characteristics.

COLOR

D E F G H I J Faint Very Light Light

CLARITY

FL	IF	VS ¹⁻²	VS ¹⁻²	SI ¹⁻²	I ¹⁻³
Flawless	Internally Flawless	Very Very Slightly Included	Very Slightly Included	Slightly Included	Included



ADDITIONAL GRADING INFORMATION

Polish **VERY GOOD**

Symmetry **EXCELLENT**

Fluorescence **SLIGHT**

Inscription(s) **LG806604845**

Comments: This Laboratory Grown Diamond was created by Chemical Vapor Deposition (CVD) growth process.
Indications of post-growth treatment.



IGI



June 3, 2026
IGI Report No **LG806604845**
EMERALD CUT

2.85 CARATS
Carat Weight
FANCY VIVID PINK
Color Grade

VS 1
Clarity Grade

9.17 X 6.73 X 4.71 MM
Depth
70%
Table
59%
Girdle
Slightly Thick

Long
Culet
VERY GOOD
Polish
EXCELLENT
Symmetry
SLIGHT
Fluorescence
Inscription(s)
 LG806604845

Comments: This Laboratory Grown Diamond was created by Chemical Vapor Deposition (CVD) growth process.
Indications of post-growth treatment.