



**ELECTRONIC COPY**

LG805695942  
Report verification at igi.org



June 2, 2026

IGI Report Number **LG805695942**

Description **LABORATORY GROWN DIAMOND**

Shape and Cutting Style **ROUND BRILLIANT**

Measurements **7.45 - 7.48 X 4.56 MM**

**GRADING RESULTS**

Carat Weight **1.55 CARAT**

Color Grade **G**

Clarity Grade **VVS 1**

Cut Grade **IDEAL**

June 2, 2026

IGI Report Number **LG805695942**

Description **LABORATORY GROWN DIAMOND**

Shape and Cutting Style **ROUND BRILLIANT**

Measurements **7.45 - 7.48 X 4.56 MM**

**GRADING RESULTS**

Carat Weight **1.55 CARAT**

Color Grade **G**

Clarity Grade **VVS 1**

Cut Grade **IDEAL**

**ADDITIONAL GRADING INFORMATION**

Polish **EXCELLENT**

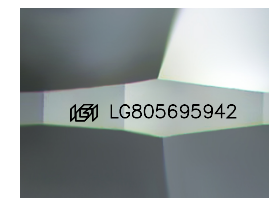
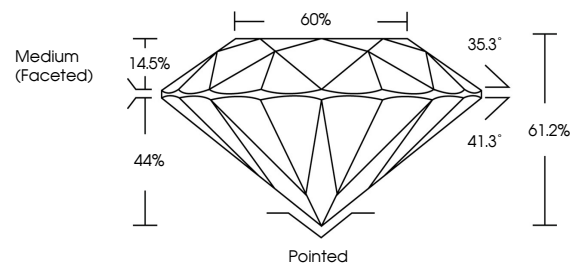
Symmetry **EXCELLENT**

Fluorescence **NONE**

Inscription(s) **LG805695942**

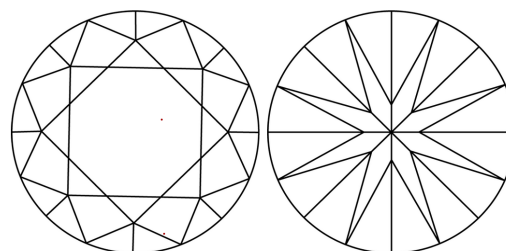
Comments: This Laboratory Grown Diamond was created by Chemical Vapor Deposition (CVD) growth process.  
Type IIa

**PROPORTIONS**



Sample Image Used

**CLARITY CHARACTERISTICS**



**KEY TO SYMBOLS**

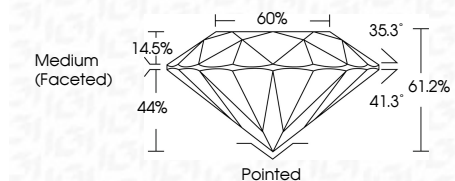
Red symbols indicate internal characteristics.  
Green symbols indicate external characteristics.

**COLOR**

D E F G H I J Faint Very Light Light

**CLARITY**

| FL       | IF                  | VVS <sup>1-2</sup>          | VS <sup>1-2</sup>      | SI <sup>1-2</sup> | I <sup>1-3</sup> |
|----------|---------------------|-----------------------------|------------------------|-------------------|------------------|
| Flawless | Internally Flawless | Very Very Slightly Included | Very Slightly Included | Slightly Included | Included         |



**ADDITIONAL GRADING INFORMATION**

Polish **EXCELLENT**

Symmetry **EXCELLENT**

Fluorescence **NONE**

Inscription(s) **LG805695942**

Comments: This Laboratory Grown Diamond was created by Chemical Vapor Deposition (CVD) growth process.  
Type IIa



**IGI**



|  |                                  |                   |                |                |                  |                  |                  |                        |
|--|----------------------------------|-------------------|----------------|----------------|------------------|------------------|------------------|------------------------|
| June 2, 2026   | IGI Report No <b>LG805695942</b> | <b>1.55 CARAT</b> | <b>G</b>       | <b>Pointed</b> | <b>EXCELLENT</b> | <b>EXCELLENT</b> | <b>NONE</b>      | <b>IGI LG805695942</b> |
| <b>ROUND BRILLIANT</b>   | <b>7.45 - 7.48 X 4.56 MM</b>     | <b>VVS 1</b>      | <b>IDEAL</b>   | <b>61.2%</b>   | <b>60%</b>       | <b>None</b>      | <b>None</b>      | <b>None</b>            |
| Carat Weight   | Color Grade                      | Clarity Grade     | Cut Grade      | Depth          | Table            | Graile           | Medium (Faceted) |                        |
| Polish   | Symmetry                         | Fluorescence      | Inscription(s) |                |                  |                  |                  |                        |
| <p>Comments: This Laboratory Grown Diamond was created by Chemical Vapor Deposition (CVD) growth process.<br/>Type IIa</p> |                                  |                   |                |                |                  |                  |                  |                        |