



June 2, 2026

IGI Report Number LG805694184
ROUND BRILLIANT
LABORATORY GROWN DIAMOND
6.14 - 6.17 X 3.78 MM

0.89 CARAT
D
VVS 2
IDEAL
EXCELLENT
EXCELLENT
NONE
Inscription(s) IGI LG805694184

Comments: This Laboratory Grown Diamond was created by Chemical Vapor Deposition (CVD) growth process. Type IIa

LABORATORY GROWN DIAMOND REPORT

June 2, 2026
IGI Report Number **LG805694184**
Description **LABORATORY GROWN DIAMOND**
Shape and Cutting Style **ROUND BRILLIANT**
Measurements **6.14 - 6.17 X 3.78 MM**

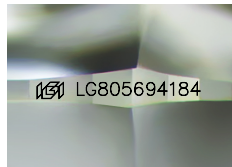
GRADING RESULTS

Carat Weight **0.89 CARAT**
Color Grade **D**
Clarity Grade **VVS 2**
Cut Grade **IDEAL**

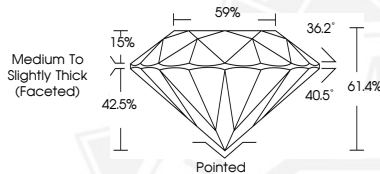
ADDITIONAL GRADING INFORMATION

Polish **EXCELLENT**
Symmetry **EXCELLENT**
Fluorescence **NONE**
Inscription(s) **IGI LG805694184**

Comments: This Laboratory Grown Diamond was created by Chemical Vapor Deposition (CVD) growth process. Type IIa



Sample Image Used



June 2, 2026

IGI Report Number LG805694184
ROUND BRILLIANT
LABORATORY GROWN DIAMOND
6.14 - 6.17 X 3.78 MM

0.89 CARAT
D
VVS 2
IDEAL
EXCELLENT
EXCELLENT
NONE
Inscription(s) IGI LG805694184

Comments: This Laboratory Grown Diamond was created by Chemical Vapor Deposition (CVD) growth process. Type IIa



THIS DOCUMENT WAS PRODUCED WITH THE FOLLOWING SECURITY MEASURES: SPECIAL DOCUMENT PAPER, INK SCREENS, WATERMARK, BACKGROUND DESIGNS, HOLOGRAM AND OTHER SECURITY FEATURES NOT LISTED AND DO EXCEED DOCUMENT SECURITY INDUSTRY GUIDELINES.