



**INTERNATIONAL  
GEMOLOGICAL  
INSTITUTE**

**ELECTRONIC COPY**



June 2, 2026

**IGI Report Number** LG805694182  
**ROUND BRILLIANT**  
**LABORATORY GROWN DIAMOND**  
**6.15 - 6.20 X 3.88 MM**

**0.92 CARAT**  
**D**  
**VVS 2**  
**EXCELLENT**  
**EXCELLENT**  
**EXCELLENT**  
**NONE**  
**IGI LG805694182**

Comments: This Laboratory Grown Diamond was created by Chemical Vapor Deposition (CVD) growth process. Type IIa

**LABORATORY GROWN DIAMOND REPORT**

June 2, 2026  
IGI Report Number **LG805694182**  
Description **LABORATORY GROWN DIAMOND**  
Shape and Cutting Style **ROUND BRILLIANT**  
Measurements **6.15 - 6.20 X 3.88 MM**

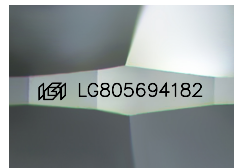
**GRADING RESULTS**

Carat Weight **0.92 CARAT**  
Color Grade **D**  
Clarity Grade **VVS 2**  
Cut Grade **EXCELLENT**

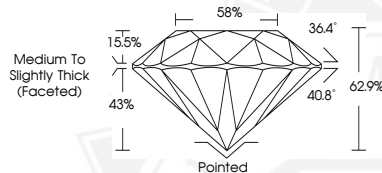
**ADDITIONAL GRADING INFORMATION**

Polish **EXCELLENT**  
Symmetry **EXCELLENT**  
Fluorescence **NONE**  
Inscription(s) **IGI LG805694182**

Comments: This Laboratory Grown Diamond was created by Chemical Vapor Deposition (CVD) growth process. Type IIa



Sample Image Used



June 2, 2026

**IGI Report Number** LG805694182  
**ROUND BRILLIANT**  
**LABORATORY GROWN DIAMOND**  
**6.15 - 6.20 X 3.88 MM**

**0.92 CARAT**  
**D**  
**VVS 2**  
**EXCELLENT**  
**EXCELLENT**  
**EXCELLENT**  
**NONE**  
**IGI LG805694182**

Comments: This Laboratory Grown Diamond was created by Chemical Vapor Deposition (CVD) growth process. Type IIa



THIS DOCUMENT WAS PRODUCED WITH THE FOLLOWING SECURITY MEASURES: SPECIAL DOCUMENT PAPER, INK SCREENS, WATERMARK, BACKGROUND DESIGNS, HOLOGRAM AND OTHER SECURITY FEATURES NOT LISTED AND DO EXCEED DOCUMENT SECURITY INDUSTRY GUIDELINES.

For terms & conditions and to verify this report, please visit [www.igi.org](http://www.igi.org)