



**ELECTRONIC COPY**

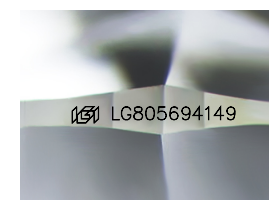
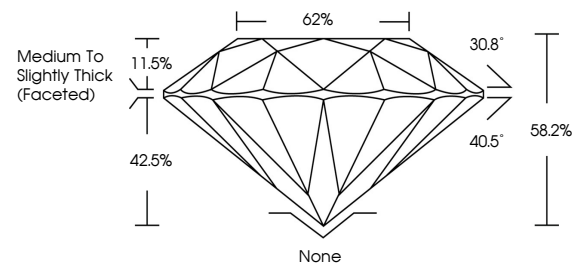
LG805694149  
Report verification at igi.org



June 11, 2026  
IGI Report Number **LG805694149**  
Description **LABORATORY GROWN DIAMOND**  
Shape and Cutting Style **ROUND BRILLIANT**  
Measurements **6.74 - 6.79 X 3.93 MM**  
**GRADING RESULTS**  
Carat Weight **1.11 CARAT**  
Color Grade **K**  
Clarity Grade **VS 1**  
Cut Grade **VERY GOOD**

June 11, 2026  
IGI Report Number **LG805694149**  
Description **LABORATORY GROWN DIAMOND**  
Shape and Cutting Style **ROUND BRILLIANT**  
Measurements **6.74 - 6.79 X 3.93 MM**

**PROPORTIONS**

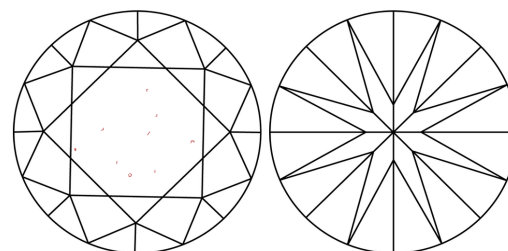


Sample Image Used

**GRADING RESULTS**

Carat Weight **1.11 CARAT**  
Color Grade **K**  
Clarity Grade **VS 1**  
Cut Grade **VERY GOOD**

**CLARITY CHARACTERISTICS**



**KEY TO SYMBOLS**

Red symbols indicate internal characteristics.  
Green symbols indicate external characteristics.

**ADDITIONAL GRADING INFORMATION**

Polish **VERY GOOD**  
Symmetry **VERY GOOD**  
Fluorescence **NONE**  
Inscription(s) **IGI LG805694149**

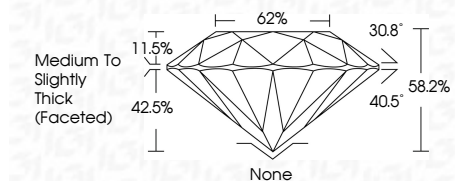
Comments: This Laboratory Grown Diamond was created by Chemical Vapor Deposition (CVD) growth process.  
Type IIa  
Faint Brown

**COLOR**

D E F G H I J Faint Very Light Light

**CLARITY**

FL	IF	VS <sup>1-2</sup>	VS <sup>1-2</sup>	SI <sup>1-2</sup>	I <sup>1-3</sup>
Flawless	Internally Flawless	Very Very Slightly Included	Very Slightly Included	Slightly Included	Included



**ADDITIONAL GRADING INFORMATION**

Polish **VERY GOOD**  
Symmetry **VERY GOOD**  
Fluorescence **NONE**  
Inscription(s) **IGI LG805694149**  
Comments: This Laboratory Grown Diamond was created by Chemical Vapor Deposition (CVD) growth process.  
Type IIa  
Faint Brown



June 11, 2026  
IGI Report No. **LG805694149**  
**ROUND BRILLIANT**  
6.74 - 6.79 X 3.93 MM  
1.11 CARAT  
Color Grade **K**  
Clarity Grade **VS 1**  
Depth **58.2%**  
Table **62%**  
Girdle **Medium To Slightly Thick (Faceted)**  
Culet **None**  
Polish **VERY GOOD**  
Symmetry **VERY GOOD**  
Fluorescence **NONE**  
Inscription(s) **IGI LG805694149**  
Comments: This Laboratory Grown Diamond was created by Chemical Vapor Deposition (CVD) growth process.  
Type IIa  
Faint Brown