



**ELECTRONIC COPY**

LG805693923  
Report verification at igi.org



June 2, 2026

IGI Report Number **LG805693923**

Description **LABORATORY GROWN DIAMOND**

Shape and Cutting Style **CUT CORNERED  
RECTANGULAR MODIFIED  
BRILLIANT**

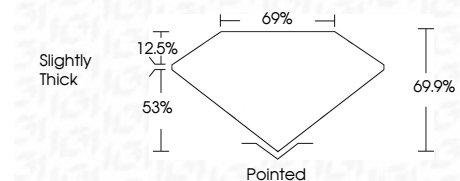
Measurements **9.96 X 7.15 X 5.00 MM**

**GRADING RESULTS**

Carat Weight **3.01 CARATS**

Color Grade **E**

Clarity Grade **VVS 2**



**ADDITIONAL GRADING INFORMATION**

Polish **EXCELLENT**

Symmetry **EXCELLENT**

Fluorescence **NONE**

Inscription(s) **IGI LG805693923**

Comments: This Laboratory Grown Diamond was created by Chemical Vapor Deposition (CVD) growth process. Type IIa



|                       |                           |                                       |               |       |       |        |       |                |          |              |                |   |                 |
|-----------------------|---------------------------|---------------------------------------|---------------|-------|-------|--------|-------|----------------|----------|--------------|----------------|---|-----------------|
| June 2, 2026          | IGI Report No LG805693923 | CUT CORNERED RECT. MODIFIED BRILLIANT | 3.01 CARATS   | E     | VVS 2 | 69%    | 69%   | Slightly Thick | Pointed  | EXCELLENT    | EXCELLENT      | NONE  | IGI LG805693923 |
| 9.96 X 7.15 X 5.00 MM | Carat Weight              | Color Grade                           | Clarity Grade | Table | Depth | Girdle | Culet | Polish         | Symmetry | Fluorescence | Inscription(s) | Comments: This Laboratory Grown Diamond was created by Chemical Vapor Deposition (CVD) growth process. Type IIa |                 |

**LABORATORY GROWN DIAMOND REPORT**

June 2, 2026

IGI Report Number **LG805693923**

Description **LABORATORY GROWN DIAMOND**

Shape and Cutting Style **CUT CORNERED RECTANGULAR  
MODIFIED BRILLIANT**

Measurements **9.96 X 7.15 X 5.00 MM**

**GRADING RESULTS**

Carat Weight **3.01 CARATS**

Color Grade **E**

Clarity Grade **VVS 2**

**ADDITIONAL GRADING INFORMATION**

Polish **EXCELLENT**

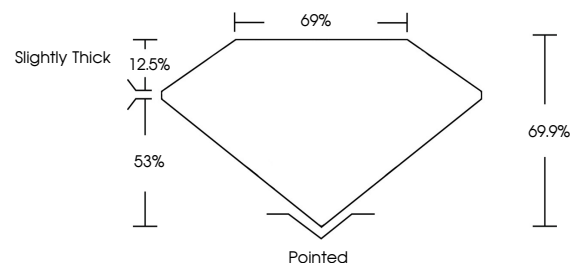
Symmetry **EXCELLENT**

Fluorescence **NONE**

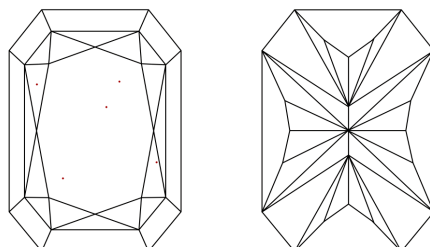
Inscription(s) **IGI LG805693923**

Comments: This Laboratory Grown Diamond was created by Chemical Vapor Deposition (CVD) growth process. Type IIa

**PROPORTIONS**

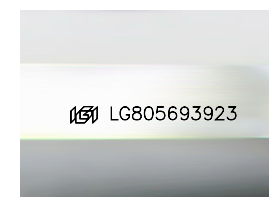


**CLARITY CHARACTERISTICS**



**KEY TO SYMBOLS**

Red symbols indicate internal characteristics.  
Green symbols indicate external characteristics.



Sample Image Used

**COLOR**

D E F G H I J Faint Very Light Light

**CLARITY**

|          |                     |                             |                        |                   |                  |
|----------|---------------------|-----------------------------|------------------------|-------------------|------------------|
| FL       | IF                  | VVS <sup>1-2</sup>          | VS <sup>1-2</sup>      | SI <sup>1-2</sup> | I <sup>1-3</sup> |
| Flawless | Internally Flawless | Very Very Slightly Included | Very Slightly Included | Slightly Included | Included         |

