



ELECTRONIC COPY

LG805693891 Report verification at igi.org



June 2, 2026 IGI Report Number LG805693891 Description LABORATORY GROWN DIAMOND Shape and Cutting Style ROUND BRILLIANT Measurements 11.82 - 11.87 X 6.88 MM GRADING RESULTS Carat Weight 6.00 CARATS Color Grade E Clarity Grade VVS 2 Cut Grade EXCELLENT

June 2, 2026 IGI Report Number LG805693891 Description LABORATORY GROWN DIAMOND Shape and Cutting Style ROUND BRILLIANT Measurements 11.82 - 11.87 X 6.88 MM

GRADING RESULTS

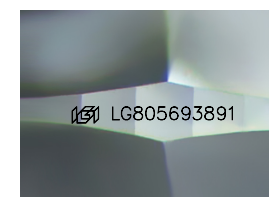
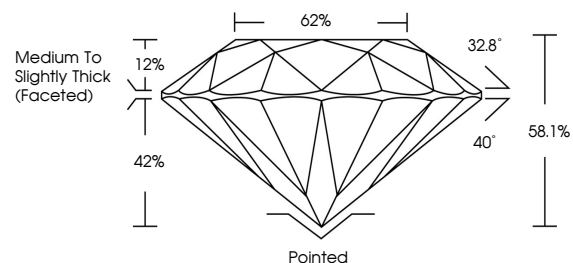
Carat Weight 6.00 CARATS Color Grade E Clarity Grade VVS 2 Cut Grade EXCELLENT

ADDITIONAL GRADING INFORMATION

Polish EXCELLENT Symmetry EXCELLENT Fluorescence NONE Inscription(s) IGI LG805693891

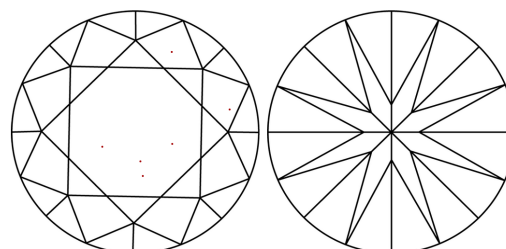
Comments: This Laboratory Grown Diamond was created by Chemical Vapor Deposition (CVD) growth process. Type IIa

PROPORTIONS



Sample Image Used

CLARITY CHARACTERISTICS



KEY TO SYMBOLS

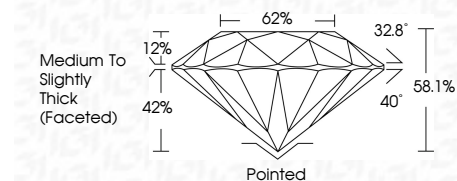
Red symbols indicate internal characteristics. Green symbols indicate external characteristics.

COLOR

D E F G H I J Faint Very Light Light

CLARITY

FL IF VVS 1-2 VS 1-2 SI 1-2 I 1-3 Flawless Internally Flawless Very Very Slightly Included Very Slightly Included Slightly Included Included



ADDITIONAL GRADING INFORMATION

Polish EXCELLENT Symmetry EXCELLENT Fluorescence NONE Inscription(s) IGI LG805693891 Comments: This Laboratory Grown Diamond was created by Chemical Vapor Deposition (CVD) growth process. Type IIa



June 2, 2026 IGI Report No. LG805693891 ROUND BRILLIANT 6.00 CARATS E VVS 2 EXCELLENT 62% Medium To Slightly Thick (Faceted) Pointed EXCELLENT EXCELLENT NONE NONE IGI LG805693891 Comments: This Laboratory Grown Diamond was created by Chemical Vapor Deposition (CVD) growth process. Type IIa