



ELECTRONIC COPY

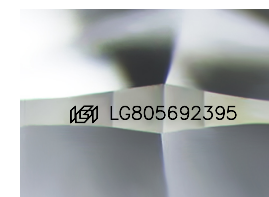
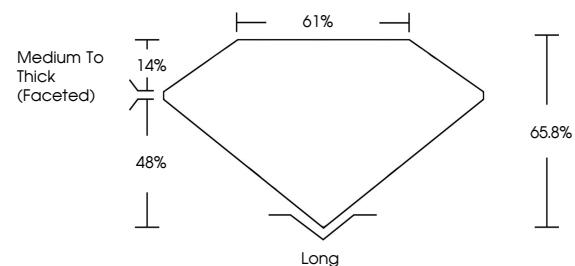
LG805692395
Report verification at igi.org



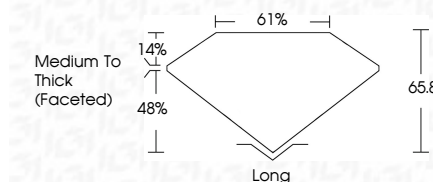
June 3, 2026
IGI Report Number **LG805692395**
Description **LABORATORY GROWN DIAMOND**
Shape and Cutting Style **CUSHION MIXED CUT**
Measurements **10.85 X 7.32 X 4.82 MM**
GRADING RESULTS
Carat Weight **3.86 CARATS**
Color Grade **F**
Clarity Grade **VVS 2**

June 3, 2026
IGI Report Number **LG805692395**
Description **LABORATORY GROWN DIAMOND**
Shape and Cutting Style **CUSHION MIXED CUT**
Measurements **10.85 X 7.32 X 4.82 MM**
GRADING RESULTS
Carat Weight **3.86 CARATS**
Color Grade **F**
Clarity Grade **VVS 2**

PROPORTIONS



Sample Image Used



ADDITIONAL GRADING INFORMATION

Polish **EXCELLENT**
Symmetry **EXCELLENT**
Fluorescence **NONE**
Inscription(s) **IGI LG805692395**

Comments: This Laboratory Grown Diamond was created by Chemical Vapor Deposition (CVD) growth process.
Type IIa

ADDITIONAL GRADING INFORMATION

Polish **EXCELLENT**
Symmetry **EXCELLENT**
Fluorescence **NONE**
Inscription(s) **IGI LG805692395**
Comments: This Laboratory Grown Diamond was created by Chemical Vapor Deposition (CVD) growth process.
Type IIa

COLOR

D E F G H I J Faint Very Light Light

CLARITY

FL	IF	VVS ¹⁻²	VS ¹⁻²	SI ¹⁻²	I ¹⁻³
Flawless	Internally Flawless	Very Very Slightly Included	Very Slightly Included	Slightly Included	Included



IGI



June 3, 2026
IGI Report No **LG805692395**
CUSHION MIXED CUT
10.85 X 7.32 X 4.82 MM
3.86 CARATS
F
VVS 2
65.8%
61%
Medium To Thick (Faceted)
Long
EXCELLENT
EXCELLENT
NONE
IGI LG805692395
Comments: This Laboratory Grown Diamond was created by Chemical Vapor Deposition (CVD) growth process.
Type IIa