



ELECTRONIC COPY

LG805692180 Report verification at igi.org



June 6, 2026 IGI Report Number LG805692180 Description LABORATORY GROWN DIAMOND Shape and Cutting Style HEXAGONAL MODIFIED BRILLIANT Measurements 12.23 X 6.42 X 4.44 MM GRADING RESULTS Carat Weight 2.22 CARATS Color Grade D Clarity Grade VVS 2

LABORATORY GROWN DIAMOND REPORT

June 6, 2026 IGI Report Number LG805692180 Description LABORATORY GROWN DIAMOND Shape and Cutting Style HEXAGONAL MODIFIED BRILLIANT Measurements 12.23 X 6.42 X 4.44 MM

GRADING RESULTS

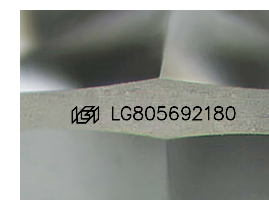
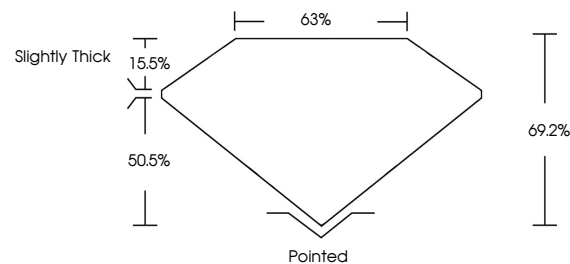
Carat Weight 2.22 CARATS Color Grade D Clarity Grade VVS 2

ADDITIONAL GRADING INFORMATION

Polish EXCELLENT Symmetry EXCELLENT Fluorescence NONE Inscription(s) LG805692180

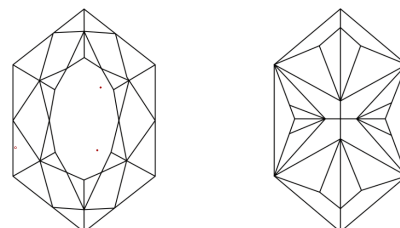
Comments: This Laboratory Grown Diamond was created by Chemical Vapor Deposition (CVD) growth process. Type IIa

PROPORTIONS



Sample Image Used

CLARITY CHARACTERISTICS



KEY TO SYMBOLS

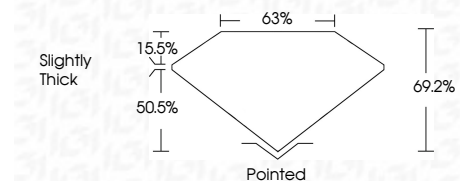
Red symbols indicate internal characteristics. Green symbols indicate external characteristics.

COLOR

D E F G H I J Faint Very Light Light

CLARITY

Table with columns: FL, IF, VVS 1-2, VS 1-2, SI 1-2, I 1-3 and corresponding descriptions: Flawless, Internally Flawless, Very Very Slightly Included, Very Slightly Included, Slightly Included, Included



ADDITIONAL GRADING INFORMATION

Polish EXCELLENT Symmetry EXCELLENT Fluorescence NONE Inscription(s) LG805692180 Comments: This Laboratory Grown Diamond was created by Chemical Vapor Deposition (CVD) growth process. Type IIa



June 6, 2026 IGI Report No. LG805692180 HEXAGONAL MODIFIED BRILLIANT 2.22 CARATS D VVS 2 69.2% 63% Slightly Thick Pointed EXCELLENT EXCELLENT NONE NONE LG805692180 Comments: This Laboratory Grown Diamond was created by Chemical Vapor Deposition (CVD) growth process. Type IIa