



ELECTRONIC COPY

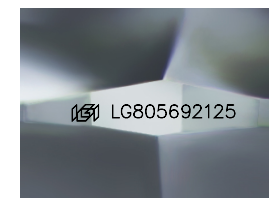
LG805692125
Report verification at igi.org



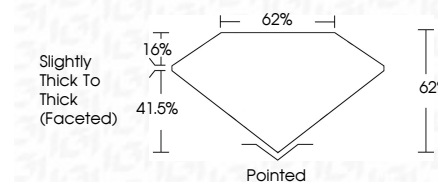
June 1, 2026
IGI Report Number **LG805692125**
Description **LABORATORY GROWN DIAMOND**
Shape and Cutting Style **ROUND MODIFIED BRILLIANT**
Measurements **7.85 - 7.85 X 4.87 MM**

GRADING RESULTS

Carat Weight **2.08 CARATS**
Color Grade **E**
Clarity Grade **VVS 2**



Sample Image Used



ADDITIONAL GRADING INFORMATION

Polish **EXCELLENT**
Symmetry **EXCELLENT**
Fluorescence **NONE**
Inscription(s) **IGI LG805692125**
Comments: This Laboratory Grown Diamond was created by Chemical Vapor Deposition (CVD) growth process. Type IIa



June 1, 2026
IGI Report No LG805692125
ROUND MODIFIED BRILLIANT
7.85 - 7.85 X 4.87 MM
2.08 CARATS
E
VVS 2
62%
62%
Slightly Thick To Thick (Faceted)
Pointed
EXCELLENT
EXCELLENT
NONE
IGI LG805692125
Comments: This Laboratory Grown Diamond was created by Chemical Vapor Deposition (CVD) growth process. Type IIa

LABORATORY GROWN DIAMOND REPORT

June 1, 2026
IGI Report Number **LG805692125**
Description **LABORATORY GROWN DIAMOND**
Shape and Cutting Style **ROUND MODIFIED BRILLIANT**
Measurements **7.85 - 7.85 X 4.87 MM**

GRADING RESULTS

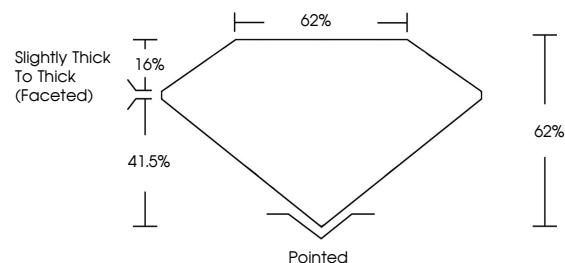
Carat Weight **2.08 CARATS**
Color Grade **E**
Clarity Grade **VVS 2**

ADDITIONAL GRADING INFORMATION

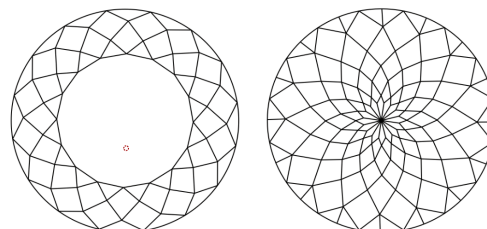
Polish **EXCELLENT**
Symmetry **EXCELLENT**
Fluorescence **NONE**
Inscription(s) **IGI LG805692125**

Comments: This Laboratory Grown Diamond was created by Chemical Vapor Deposition (CVD) growth process. Type IIa

PROPORTIONS



CLARITY CHARACTERISTICS



KEY TO SYMBOLS

Red symbols indicate internal characteristics.
Green symbols indicate external characteristics.

COLOR

D E F G H I J Faint Very Light Light

CLARITY

FL	IF	VVS ¹⁻²	VS ¹⁻²	SI ¹⁻²	I ¹⁻³
Flawless	Internally Flawless	Very Very Slightly Included	Very Slightly Included	Slightly Included	Included

