



June 3, 2026

IGI Report Number LG805690512
ROUND BRILLIANT
LABORATORY GROWN DIAMOND
6.18 - 6.22 X 3.74 MM

0.87 CARAT
D
VS 2
IDEAL
EXCELLENT
EXCELLENT
NONE
IGI LG805690512

Comments: As Grown - No indication of post-growth treatment. This Laboratory Grown Diamond was created by High Pressure High Temperature (HPHT) growth process. Type II

LABORATORY GROWN DIAMOND REPORT

June 3, 2026
IGI Report Number **LG805690512**
Description **LABORATORY GROWN DIAMOND**
Shape and Cutting Style **ROUND BRILLIANT**
Measurements **6.18 - 6.22 X 3.74 MM**

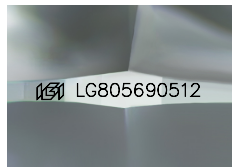
GRADING RESULTS

Carat Weight **0.87 CARAT**
Color Grade **D**
Clarity Grade **VS 2**
Cut Grade **IDEAL**

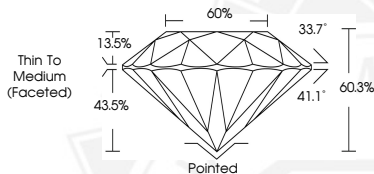
ADDITIONAL GRADING INFORMATION

Polish **EXCELLENT**
Symmetry **EXCELLENT**
Fluorescence **NONE**
Inscription(s) **IGI LG805690512**

Comments: As Grown - No indication of post-growth treatment. This Laboratory Grown Diamond was created by High Pressure High Temperature (HPHT) growth process. Type II



Sample Image Used



June 3, 2026

IGI Report Number LG805690512
ROUND BRILLIANT
LABORATORY GROWN DIAMOND
6.18 - 6.22 X 3.74 MM

0.87 CARAT
D
VS 2
IDEAL
EXCELLENT
EXCELLENT
NONE
IGI LG805690512

Comments: As Grown - No indication of post-growth treatment. This Laboratory Grown Diamond was created by High Pressure High Temperature (HPHT) growth process. Type II

THIS DOCUMENT WAS PRODUCED WITH THE FOLLOWING SECURITY MEASURES: SPECIAL DOCUMENT PAPER, INK SCREENS, WATERMARK, BACKGROUND DESIGNS, HOLOGRAM AND OTHER SECURITY FEATURES NOT LISTED AND DO EXCEED DOCUMENT SECURITY INDUSTRY GUIDELINES.

For terms & conditions and to verify this report, please visit www.igi.org