



ELECTRONIC COPY

LG805690013
Report verification at igi.org



June 5, 2026
IGI Report Number **LG805690013**
Description **LABORATORY GROWN DIAMOND**
Shape and Cutting Style **EMERALD CUT**
Measurements **10.97 X 7.06 X 4.56 MM**
GRADING RESULTS
Carat Weight **3.52 CARATS**
Color Grade **FANCY VIVID PINK**
Clarity Grade **VS 2**

June 5, 2026
IGI Report Number **LG805690013**
Description **LABORATORY GROWN DIAMOND**
Shape and Cutting Style **EMERALD CUT**
Measurements **10.97 X 7.06 X 4.56 MM**

GRADING RESULTS

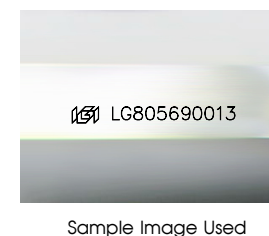
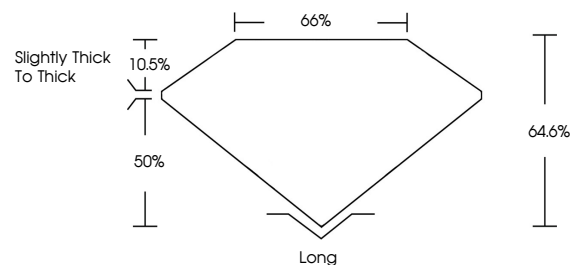
Carat Weight **3.52 CARATS**
Color Grade **FANCY VIVID PINK**
Clarity Grade **VS 2**

ADDITIONAL GRADING INFORMATION

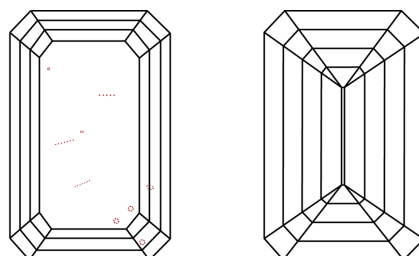
Polish **EXCELLENT**
Symmetry **EXCELLENT**
Fluorescence **SLIGHT**
Inscription(s) **LG805690013**

Comments: This Laboratory Grown Diamond was created by Chemical Vapor Deposition (CVD) growth process.
Indications of post-growth treatment.

PROPORTIONS



CLARITY CHARACTERISTICS



KEY TO SYMBOLS

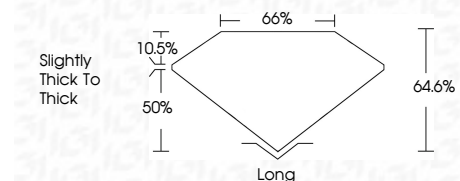
Red symbols indicate internal characteristics.
Green symbols indicate external characteristics.

COLOR

D E F G H I J Faint Very Light Light

CLARITY

| FL | IF | VS ¹⁻² | VS ¹⁻² | SI ¹⁻² | I ¹⁻³ |
|----------|---------------------|-----------------------------|------------------------|-------------------|------------------|
| Flawless | Internally Flawless | Very Very Slightly Included | Very Slightly Included | Slightly Included | Included |



ADDITIONAL GRADING INFORMATION

Polish **EXCELLENT**
Symmetry **EXCELLENT**
Fluorescence **SLIGHT**
Inscription(s) **LG805690013**
Comments: This Laboratory Grown Diamond was created by Chemical Vapor Deposition (CVD) growth process.
Indications of post-growth treatment.



June 5, 2026
IGI Report No **LG805690013**
EMERALD CUT
Carat Weight **3.52 CARATS**
Color Grade **FANCY VIVID PINK**
Clarity Grade **VS 2**
Table **10.5%**
Depth **50%**
Girdle **Slightly thick to Thick**
Culet **Long**
Polish **EXCELLENT**
Symmetry **EXCELLENT**
Fluorescence **SLIGHT**
Inscription(s) **LG805690013**
Comments: This Laboratory Grown Diamond was created by Chemical Vapor Deposition (CVD) growth process.
Indications of post-growth treatment.