



ELECTRONIC COPY

LG805684813
Report verification at igi.org



May 30, 2026
IGI Report Number **LG805684813**
Description **LABORATORY GROWN DIAMOND**
Shape and Cutting Style **CUSHION MODIFIED BRILLIANT**
Measurements **9.48 X 7.33 X 5.05 MM**
GRADING RESULTS
Carat Weight **3.00 CARATS**
Color Grade **F**
Clarity Grade **VVS 2**

May 30, 2026
IGI Report Number **LG805684813**
Description **LABORATORY GROWN DIAMOND**
Shape and Cutting Style **CUSHION MODIFIED BRILLIANT**
Measurements **9.48 X 7.33 X 5.05 MM**

GRADING RESULTS

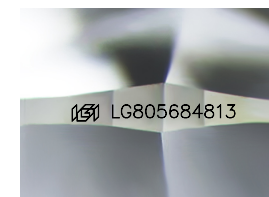
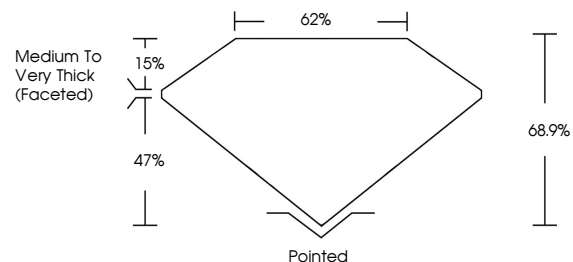
Carat Weight **3.00 CARATS**
Color Grade **F**
Clarity Grade **VVS 2**

ADDITIONAL GRADING INFORMATION

Polish **EXCELLENT**
Symmetry **EXCELLENT**
Fluorescence **NONE**
Inscription(s) **IGI LG805684813**

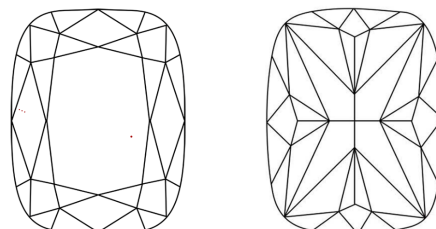
Comments: This Laboratory Grown Diamond was created by Chemical Vapor Deposition (CVD) growth process.
Type IIa

PROPORTIONS



Sample Image Used

CLARITY CHARACTERISTICS



KEY TO SYMBOLS

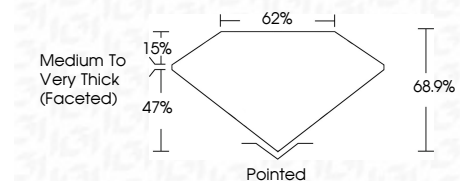
Red symbols indicate internal characteristics.
Green symbols indicate external characteristics.

COLOR

D E F G H I J Faint Very Light Light

CLARITY

FL	IF	VVS ¹⁻²	VS ¹⁻²	SI ¹⁻²	I ¹⁻³
Flawless	Internally Flawless	Very Very Slightly Included	Very Slightly Included	Slightly Included	Included



ADDITIONAL GRADING INFORMATION

Polish **EXCELLENT**
Symmetry **EXCELLENT**
Fluorescence **NONE**
Inscription(s) **IGI LG805684813**
Comments: This Laboratory Grown Diamond was created by Chemical Vapor Deposition (CVD) growth process.
Type IIa



May 30, 2026
IGI Report No LG805684813
CUSHION MODIFIED BRILLIANT
9.48 X 7.33 X 5.05 MM
3.00 CARATS
F
VVS 2
68.9%
62%
Medium to Very Thick (Faceted)
Pointed
EXCELLENT
EXCELLENT
NONE
IGI LG805684813
Comments: This Laboratory Grown Diamond was created by Chemical Vapor Deposition (CVD) growth process.
Type IIa