



June 2, 2026

IGI Report Number **LG805680745**

**ROUND BRILLIANT  
LABORATORY GROWN DIAMOND  
5.10 - 5.13 X 3.20 MM**

Carat Weight	<b>0.51 CARAT</b>
Color Grade	<b>D</b>
Clarity Grade	<b>VS 2</b>
Cut Grade	<b>IDEAL</b>
Polish	<b>VERY GOOD</b>
Symmetry	<b>VERY GOOD</b>
Fluorescence	<b>NONE</b>
Inscription(s)	<b>IGI LG805680745</b>

Comments: As Grown - No indication of post-growth treatment. This Laboratory Grown Diamond was created by High Pressure High Temperature (HPHT) growth process. Type II

**LABORATORY GROWN DIAMOND REPORT**

June 2, 2026  
IGI Report Number **LG805680745**  
Description **LABORATORY GROWN DIAMOND**  
Shape and Cutting Style **ROUND BRILLIANT**  
Measurements **5.10 - 5.13 X 3.20 MM**

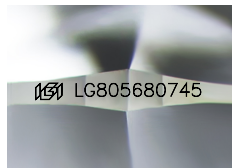
**GRADING RESULTS**

Carat Weight **0.51 CARAT**  
Color Grade **D**  
Clarity Grade **VS 2**  
Cut Grade **IDEAL**

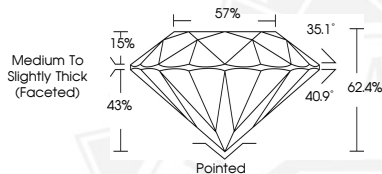
**ADDITIONAL GRADING INFORMATION**

Polish **VERY GOOD**  
Symmetry **VERY GOOD**  
Fluorescence **NONE**  
Inscription(s) **IGI LG805680745**

Comments: As Grown - No indication of post-growth treatment. This Laboratory Grown Diamond was created by High Pressure High Temperature (HPHT) growth process. Type II



Sample Image Used



June 2, 2026

IGI Report Number **LG805680745**

**ROUND BRILLIANT  
LABORATORY GROWN DIAMOND  
5.10 - 5.13 X 3.20 MM**

Carat Weight	<b>0.51 CARAT</b>
Color Grade	<b>D</b>
Clarity Grade	<b>VS 2</b>
Cut Grade	<b>IDEAL</b>
Polish	<b>VERY GOOD</b>
Symmetry	<b>VERY GOOD</b>
Fluorescence	<b>NONE</b>
Inscription(s)	<b>IGI LG805680745</b>

Comments: As Grown - No indication of post-growth treatment. This Laboratory Grown Diamond was created by High Pressure High Temperature (HPHT) growth process. Type II

THIS DOCUMENT WAS PRODUCED WITH THE FOLLOWING SECURITY MEASURES: SPECIAL DOCUMENT PAPER, INK SCREENS, WATERMARK, BACKGROUND DESIGNS, HOLOGRAM AND OTHER SECURITY FEATURES NOT LISTED AND DO EXCEED DOCUMENT SECURITY INDUSTRY GUIDELINES.

For terms & conditions and to verify this report, please visit [www.igi.org](http://www.igi.org)